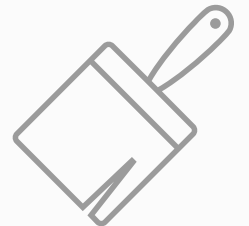
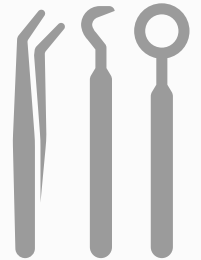
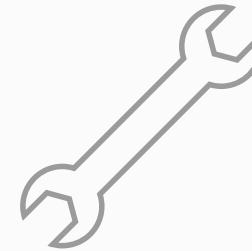
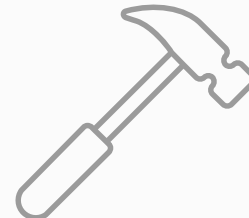
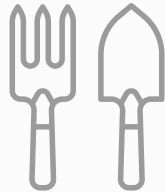
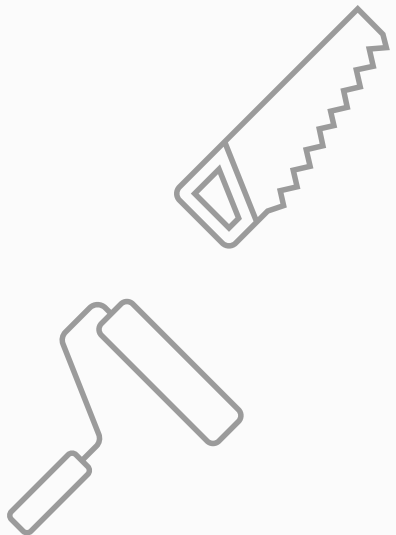


Using climate adaptation tools

Steph McAfee, USGS SW CASC





HOME

SCIENCE

DATA

MULTIMEDIA

PUBLICATIONS

WEB TOOLS

NEWS

CONNECT

PARTNERS

Climate Adaptation Science Centers

From wildfires to sea-level rise, climate change creates evolving challenges for ecosystems across the Nation. The USGS National and Regional Climate Adaptation Science Centers (CASCs) is a partnership-driven program that teams scientists with natural and cultural resource managers and local communities to help fish, wildlife, water, land, and people adapt to a changing climate.

[Newsletter Signup](#)

[Our Science](#)

[The CASCs](#)

[Education](#)

[Northern Forests Climate Hub](#) [About](#) [Topics](#) [Climate Impacts](#) [Actions & Resources](#) [Partners](#)

Mcafee, Stephanie A (smcafee@usgs.gov) is signed in

[Adaptation Tools](#)



climate

ation
an
te a

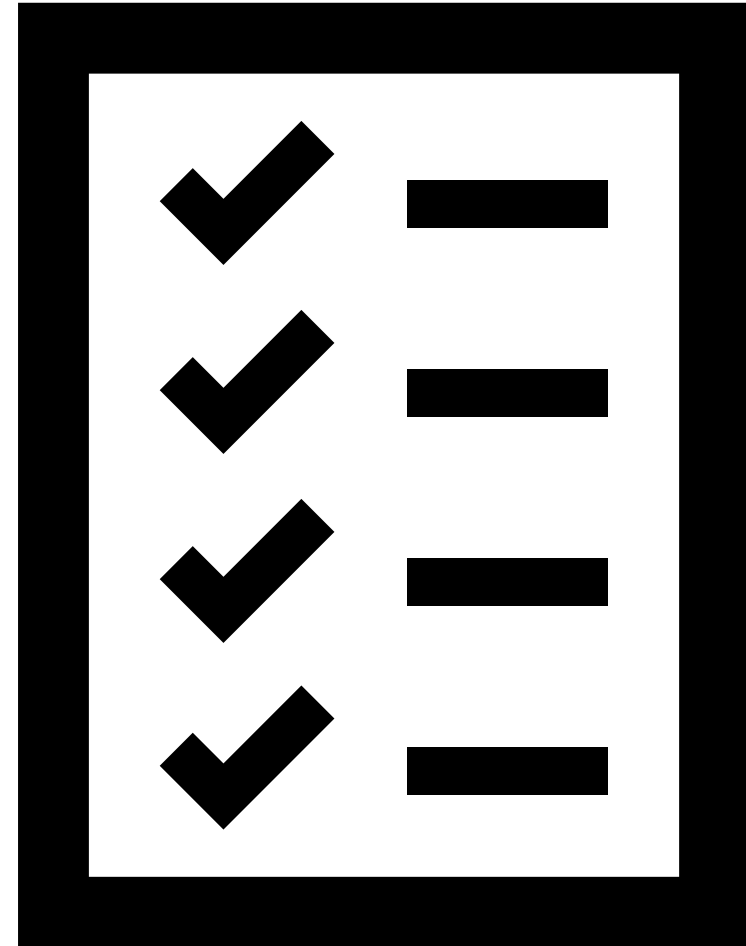
Today's goals

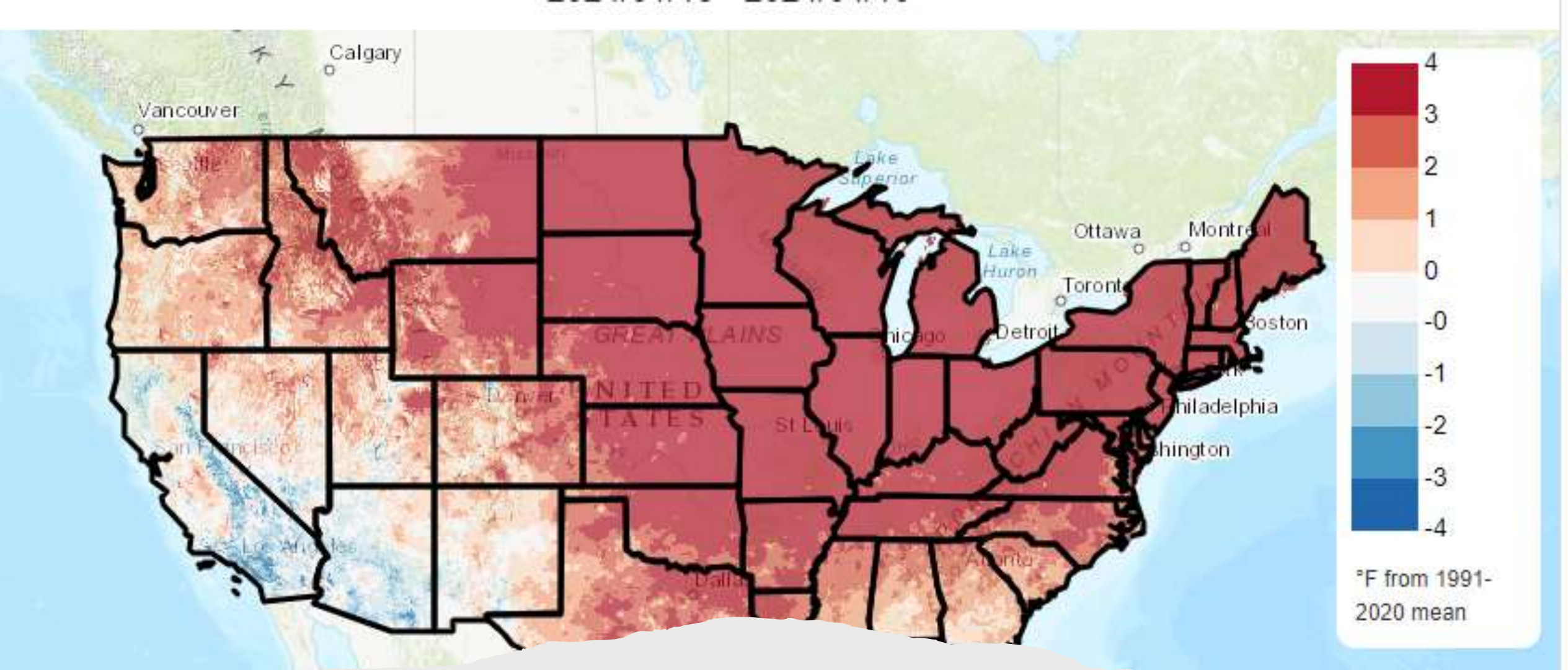
Feel more comfortable navigating tools.

Explore three useful tools.

- Climate Toolbox
- Land Treatment Exploration Tool
- Climate-Smart Restoration Tool

What should I
look for in a
tool or
dataset?

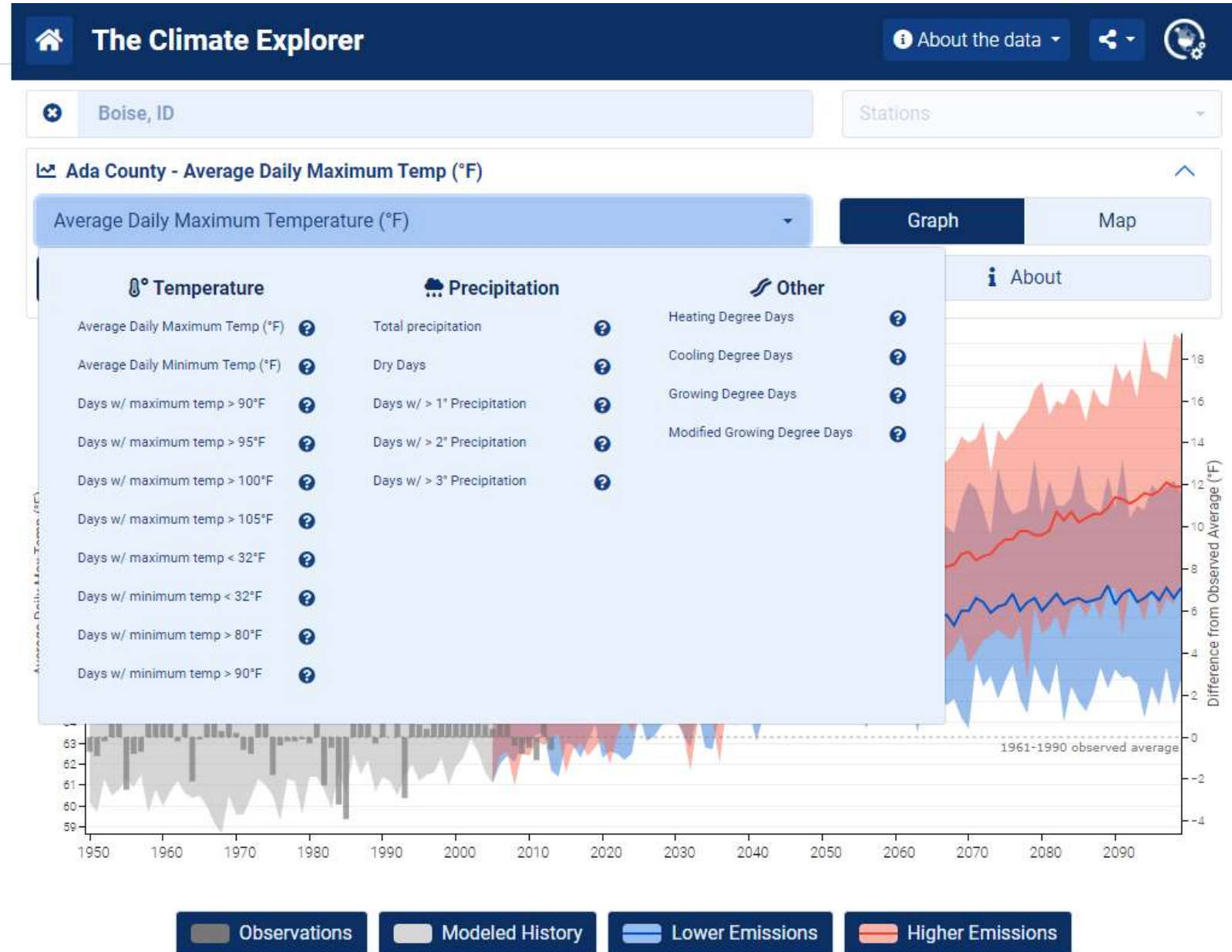




What should I look for in a tool?
It has the data you need.

What should I look for in a tool?

It has the data you need.



What should I look for in a tool or dataset?



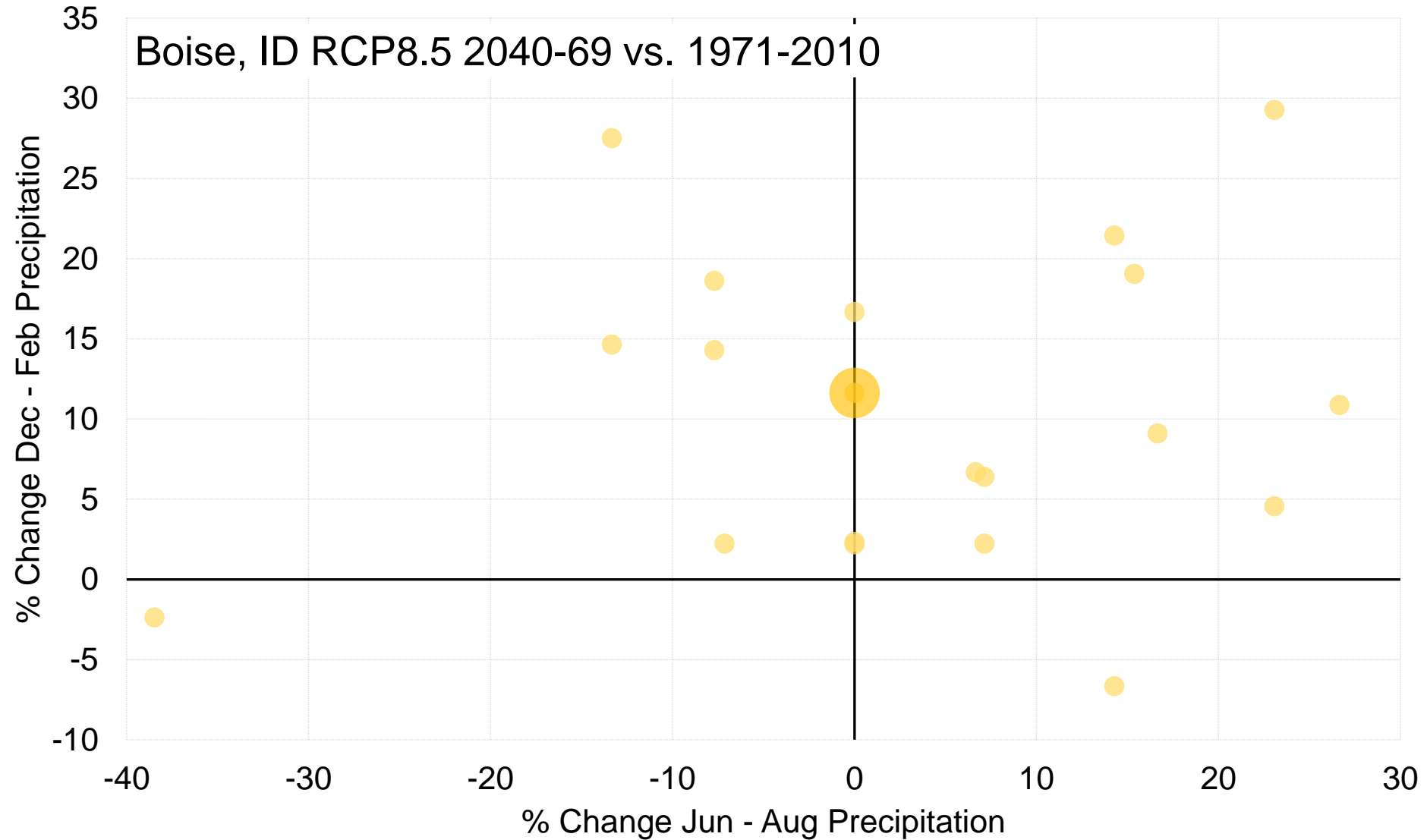
Points to peer-reviewed literature or another reputable source.

What should I look for
in a tool or dataset?

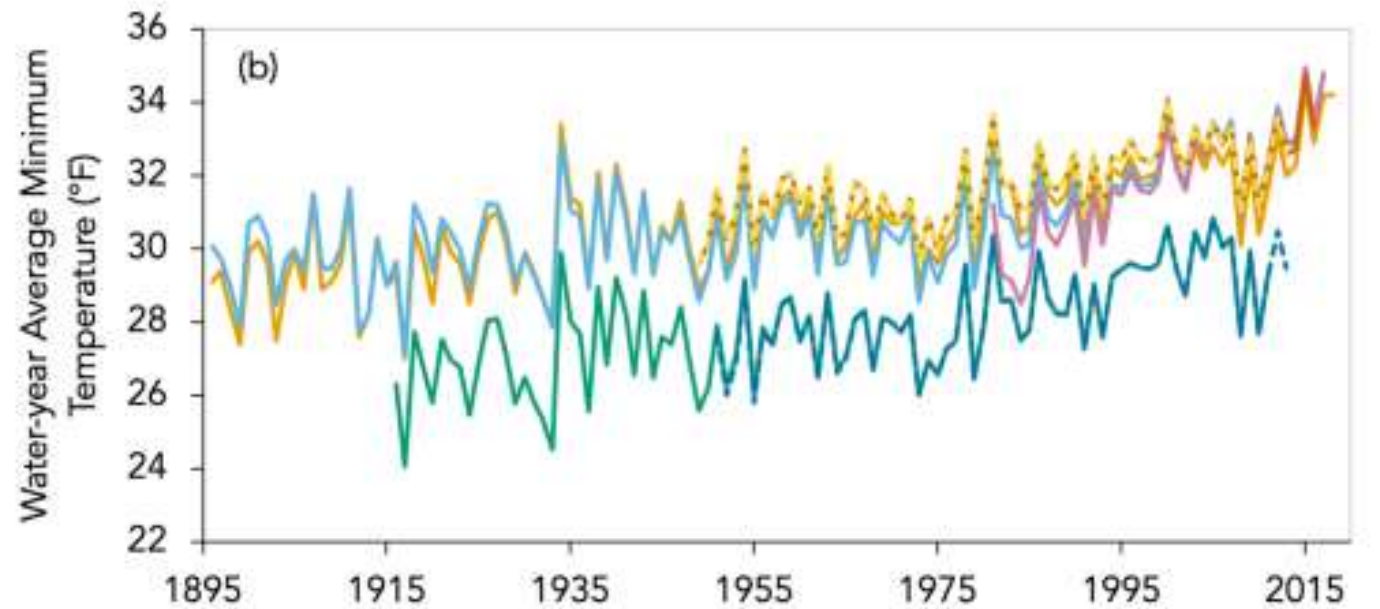
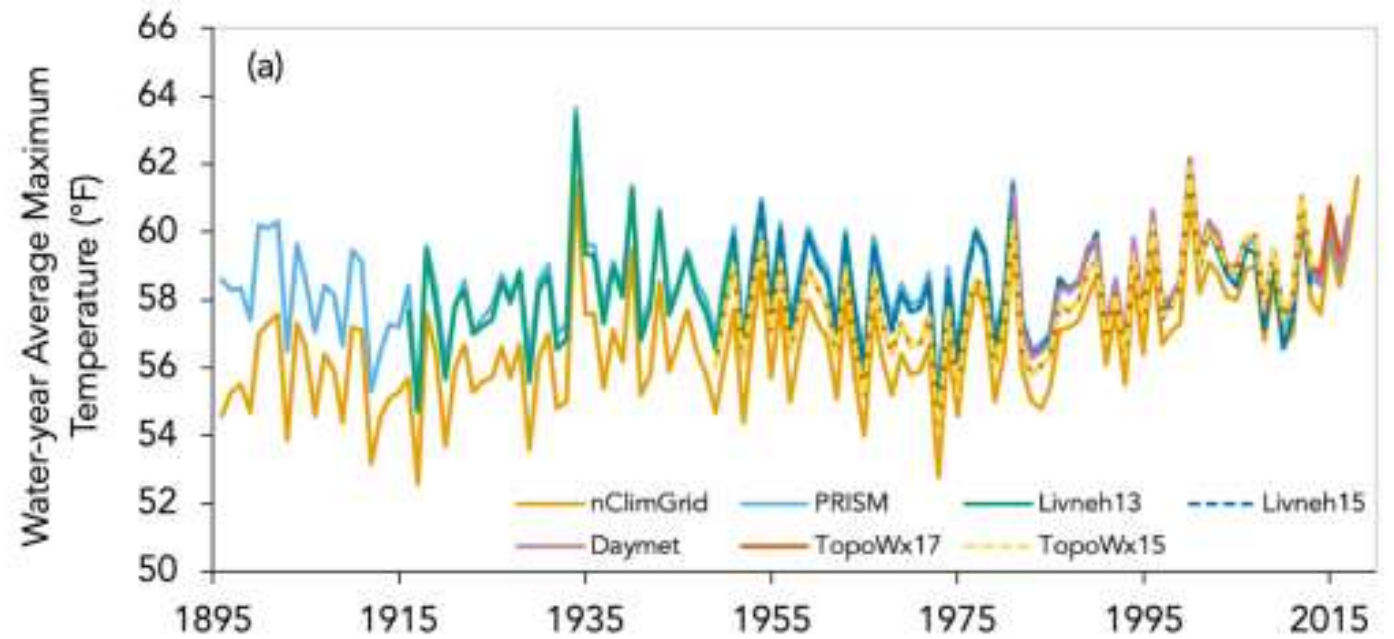


It's easy to learn about the
data.

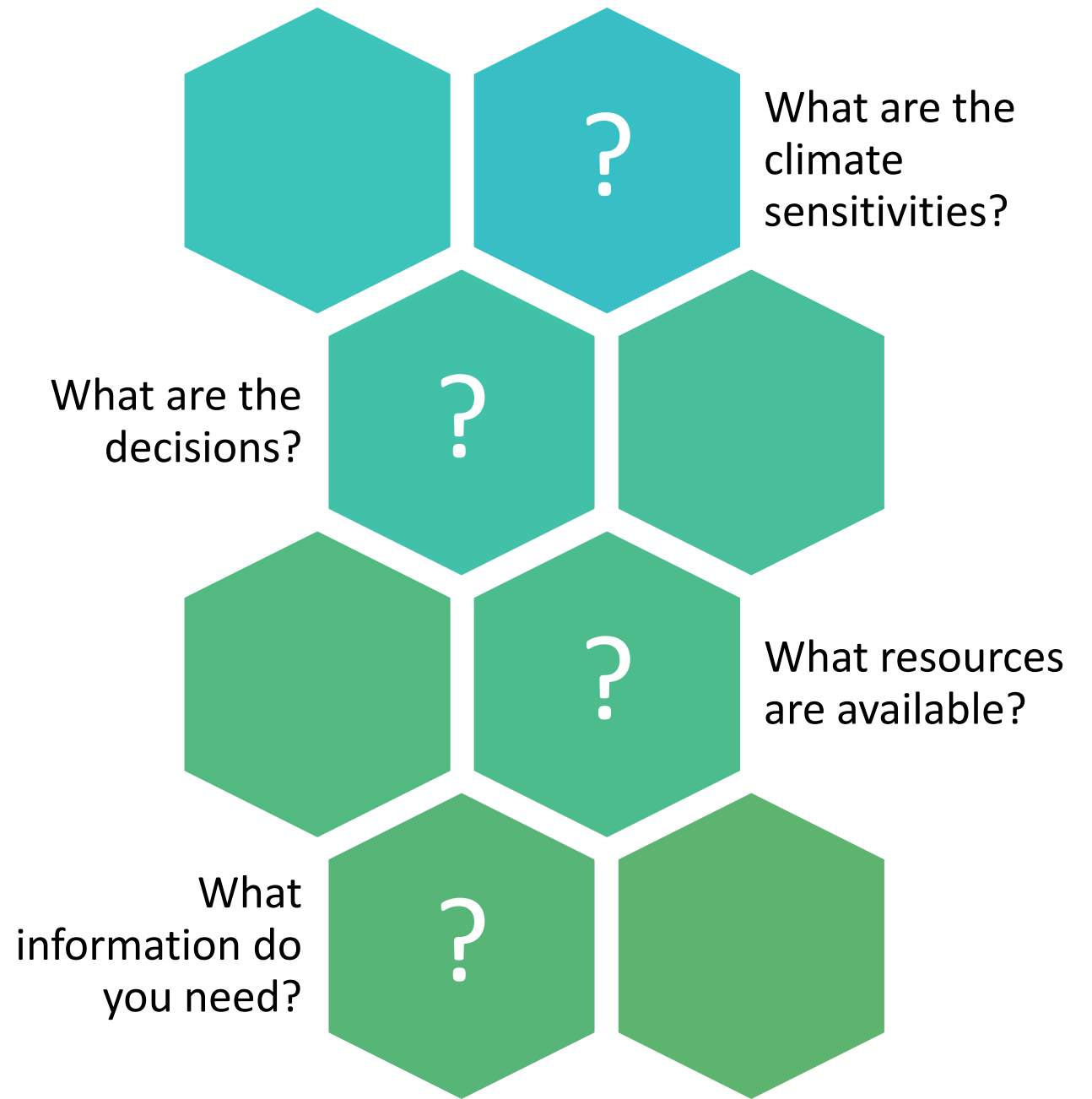
It's possible to look at the range of variability.



Different data
are different.



The tool is only one part of the process.



Feeling lost?



