

LOUISIANA FISHERIES FORWARD: a program for the commercial seafood community

Julie Lively
November 10, 2022
SCCASC



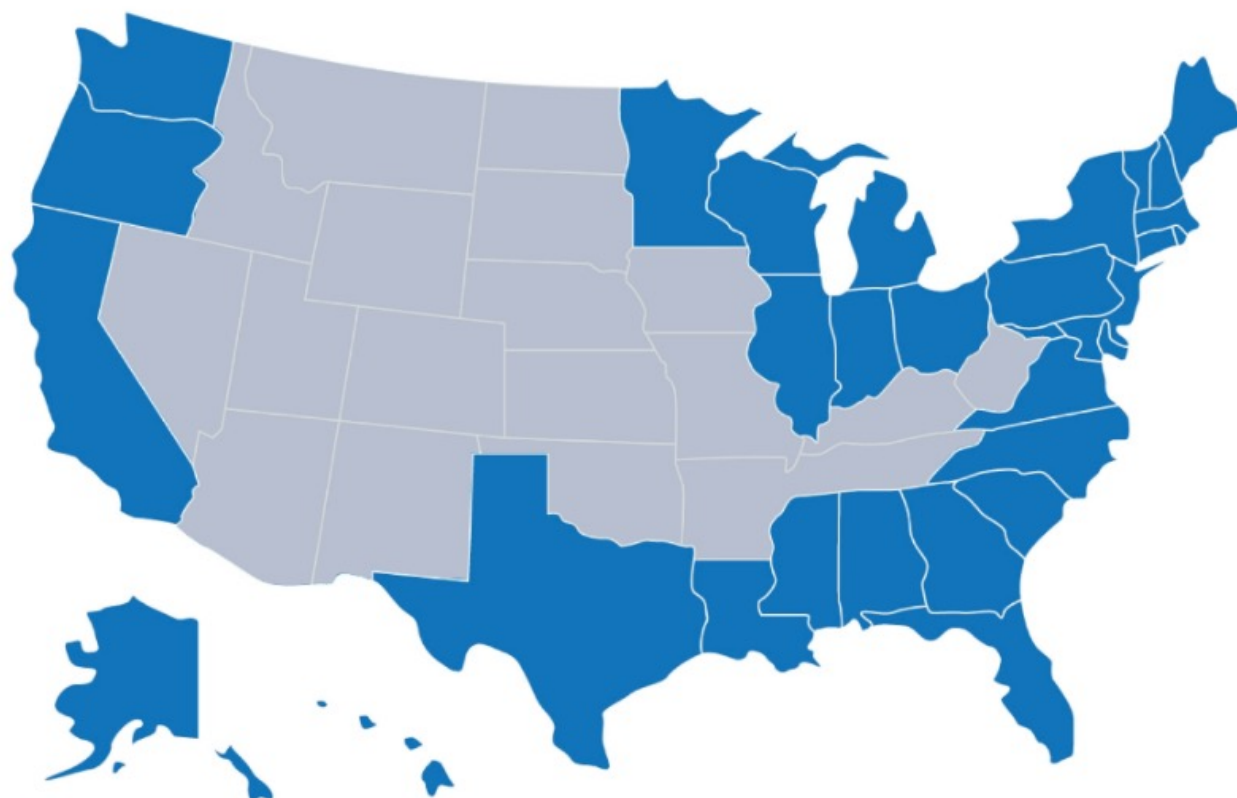


Sea Grant **Federal-State Partnership**

34 Programs

50+ Years

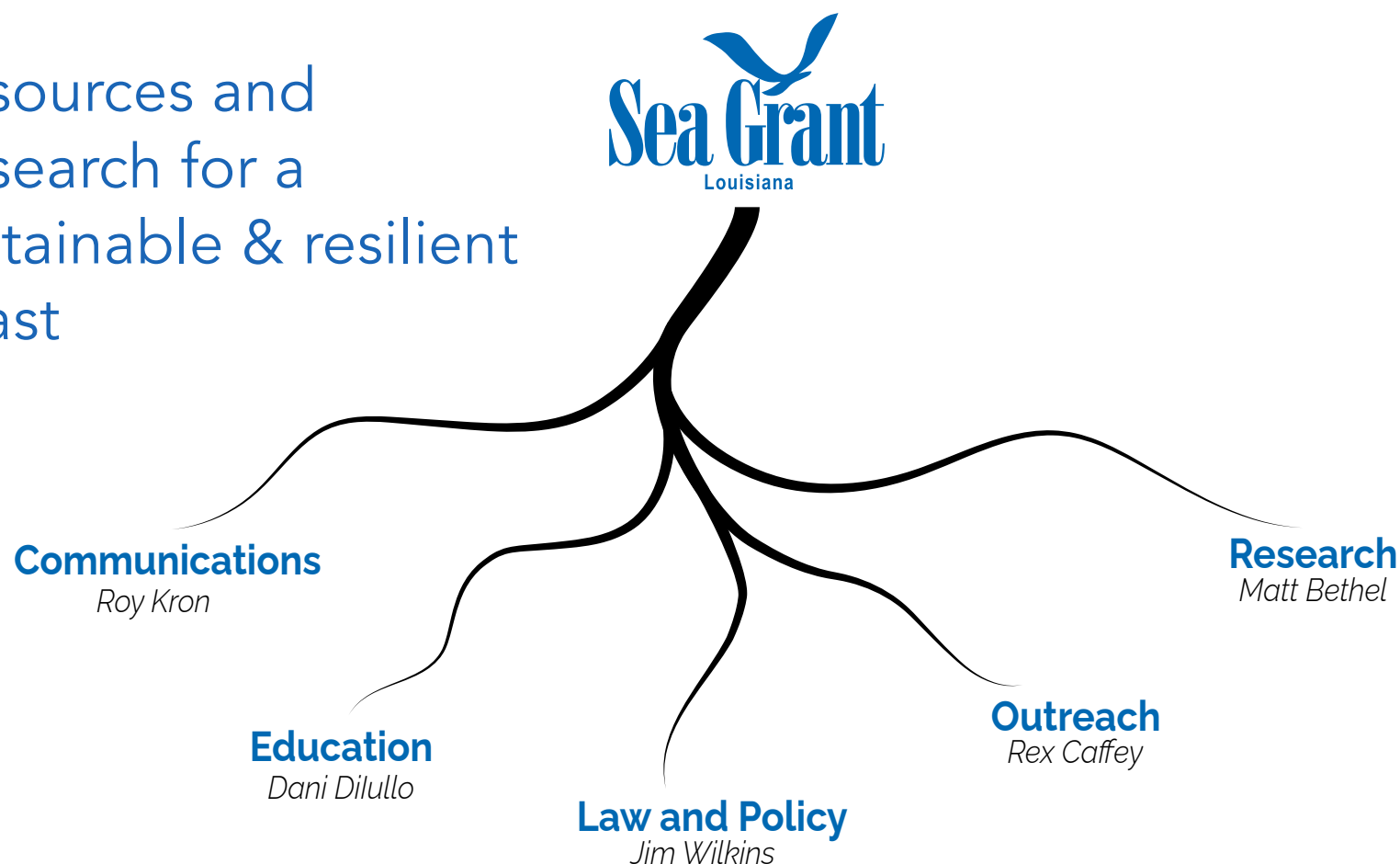
**Coastal and
Great Lakes
Resources**



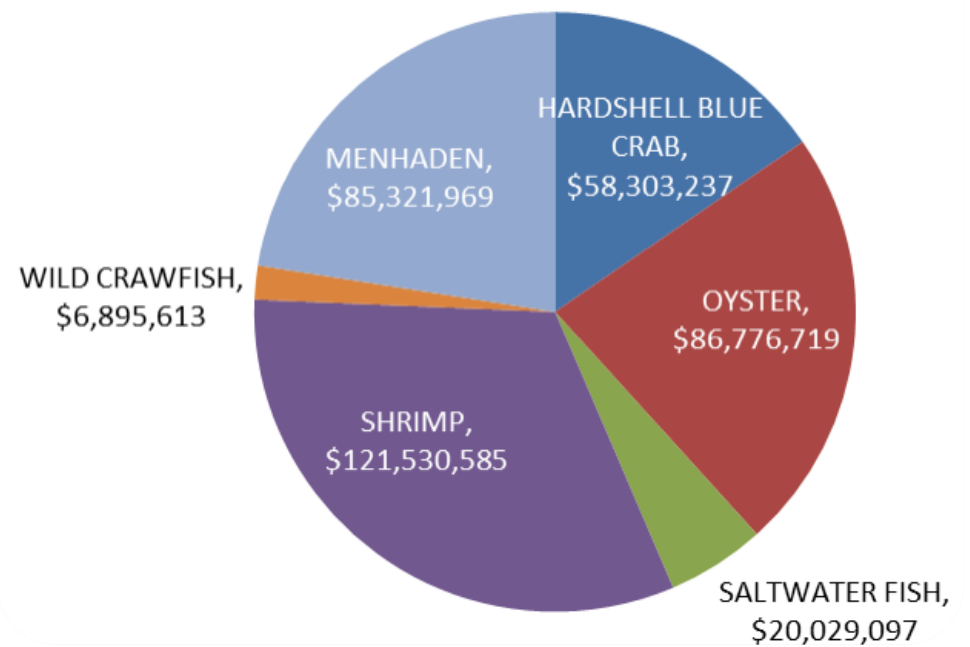
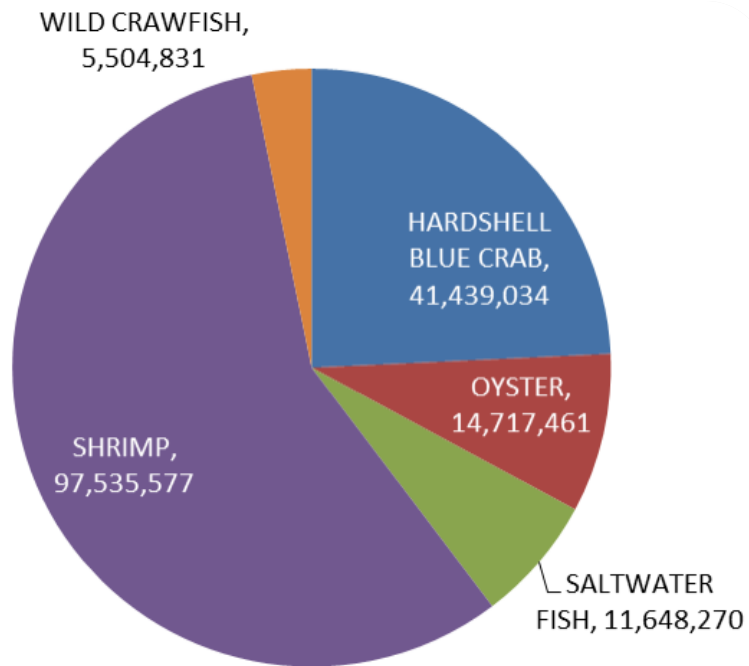
What is Louisiana Sea Grant?

3

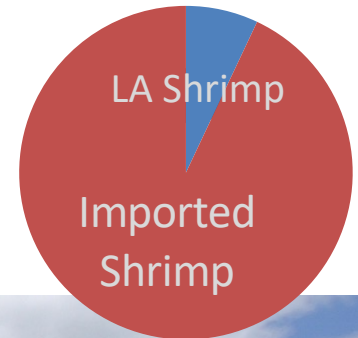
Resources and
Research for a
sustainable & resilient
coast



One billion pounds of seafood with a dockside value almost **\$400 million** with **11,825 Commercial Fishermen**



Shrimp industry in decline



1980s – 1990s

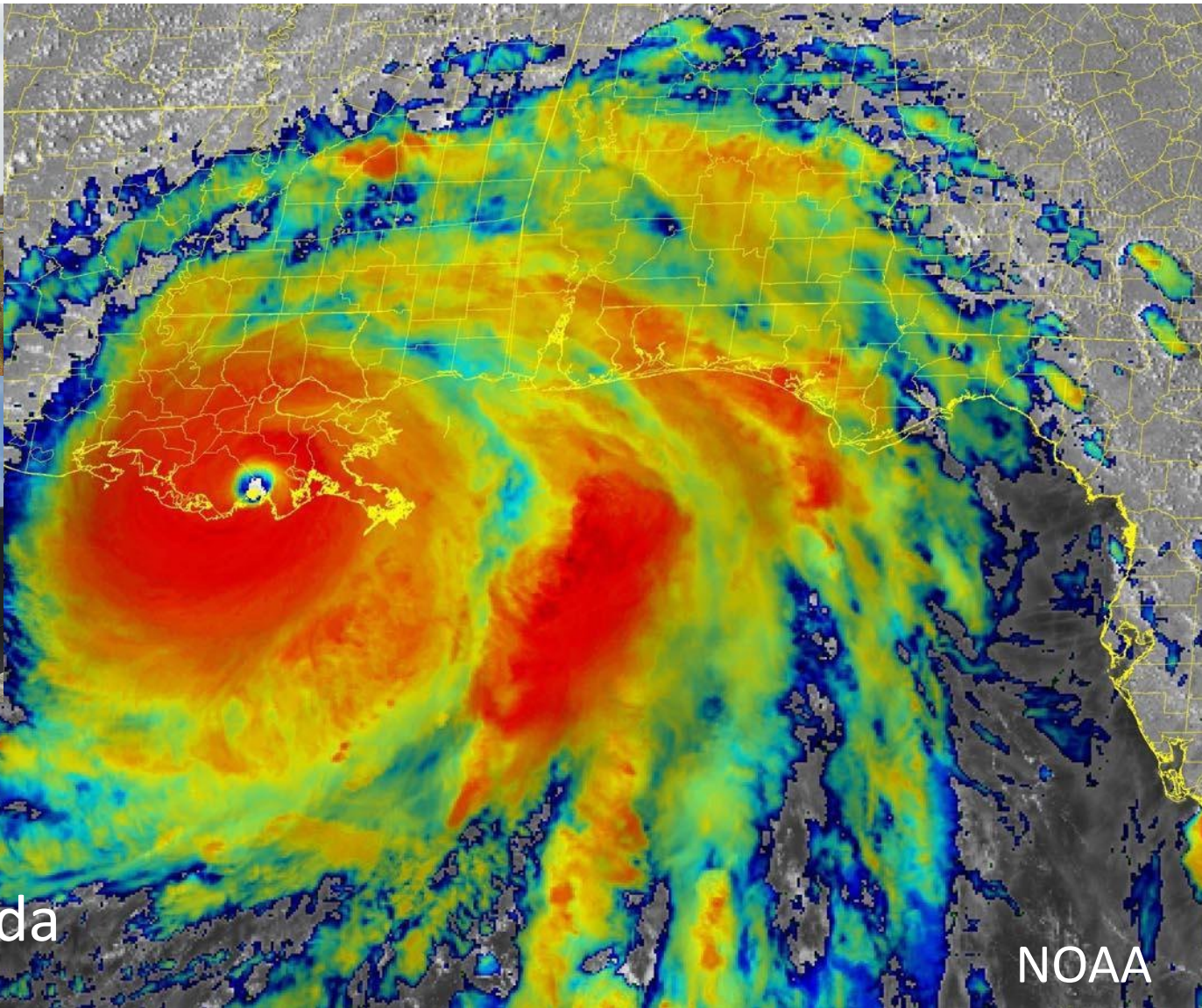
2020s

Increasing fuel prices

Decreasing dock prices

Global imports on rise





Laura, Delta, Zeta, Ida

NOAA

Enter Louisiana Fisheries Forward

Overall Goal

To improve the economic viability and resource stewardship of Louisiana's commercial fishing industry.



2013



Three-way interactions



Outreach

- Compliance
- Rule changes
- Rapid response



Extension & Research

- Blackspot
- Off bottom culture
- Catfish processing



Engagement: what industry needs?

- TEDs training
- Water bottom access



Summits

Dock Days

Workshops

Fisheries Forward Summit

Fact Sheets

Website

Video Series

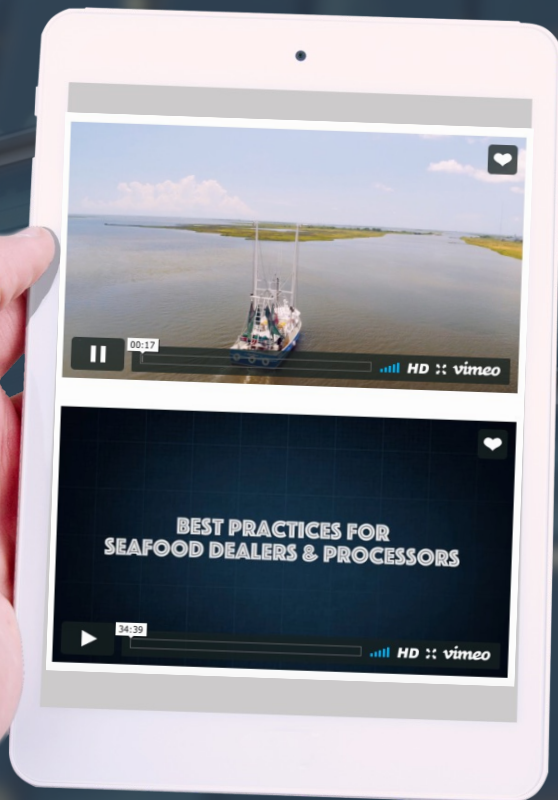
Video Series

10

A professional film crew went along the coast to capture video of fishermen and processors . . .



Fishery Video Series



- ✓ Best Practices for Commercial Fishermen
- ✓ Best Practices for Seafood Dealers and Processors
- ✓ Best Practices for Commercial Crab Fishermen
- ✓ Best Business Practices for the Seafood Industry
- ✓ Best Practices for Commercial Shrimpers
- ✓ Best Practices for Commercial Oyster Harvesters
- ✓ Best Practices for Commercial Saltwater Finfishermen
- ✓ Fisheries Management and the Regulatory Process
- ✓ Best Practices for Recreation For Hire
- ✓ Best Practices for Freshwater Fishermen

LOUISIANA FISHERIES FORWARD
Advancing Our Seafood Industry

Home Fisheries News About Events Resources Contact Summit

Blower Tank Filter Water pump

03:10

Asian Carp: When Fish Fly, Feast!

00:24

Best Handling Practices for Wild Alligator

01:28

ICE SLUSH FOR NO MORE THAN 12 HOURS
THEN MOVE TO A COOL

Soft Shell Crab Shedding Overview

PRE-MOLTING BUSTING SOFTSHELL HARDENING

Soft for a couple of hours

Catfish Product Label Requirements

APPROVED GENERICALLY

ANY BRAND CATFISH FILLETS

REGULATORY REQUIREMENTS

- 01. PLACEMENT
- 02. PROMINENCE
- 03. NUTRIMENT CONTENT CLAIMS
- 04. SODIUM CLAIMS
- 05. CALORIES
- 06. INGREDIENTS
- 07. NET WEIGHT
- 08. NUTRITION

00:54

Recap on Crab Traps 2022

ESCAPE RINGS

2' 8" INSIDE DIAMETER

Complex, hard to film topics.

A photograph showing a large quantity of blue crabs, likely in a wooden crate or bin. The crabs are piled together, with their blue and white shells and legs visible. The background is a wooden surface, possibly the interior of the container. A semi-transparent blue box is overlaid on the image, containing text.

Louisiana Fisheries Forward Commercial Crab Gear Requirements Program

- Four mandatory courses
- Workshops
- Professionalism & compliance of the industry
- Oysters

Research Needs & Extension

Black spot prevention with new products

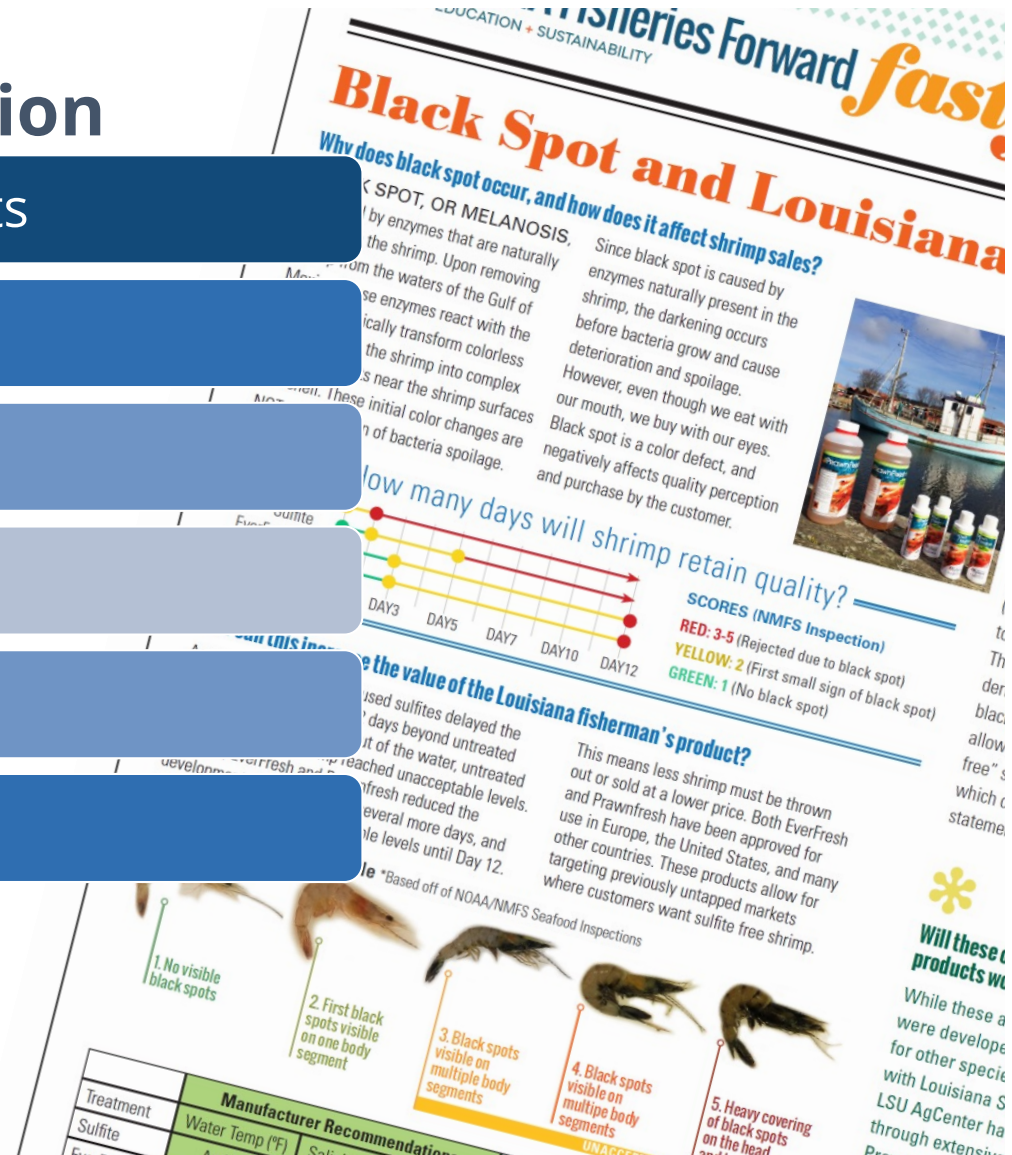
Freshwater commercial fisheries

Alligator best handling post harvest

Bycatch in the black drum fishery

Catfish processing

BMPS and improved quality



Welcome to Louisiana Fisheries Forward

A voluntary education and training program from the
Louisiana Department of Wildlife and Fisheries and Louisiana Sea Grant College Program at LSU.

15

Commercial Fishing



Dealers & Processors



Business Management



Industry Information



CRAB



SHRIMP



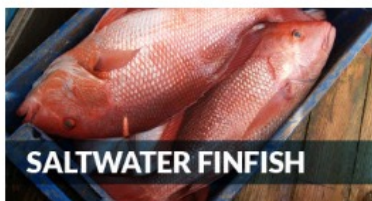
OYSTER



ALTERNATIVE OYSTER CULTURE



SALTWATER FINFISH



FRESHWATER FISHERIES



RECREATION FOR HIRE



ALLIGATOR

