

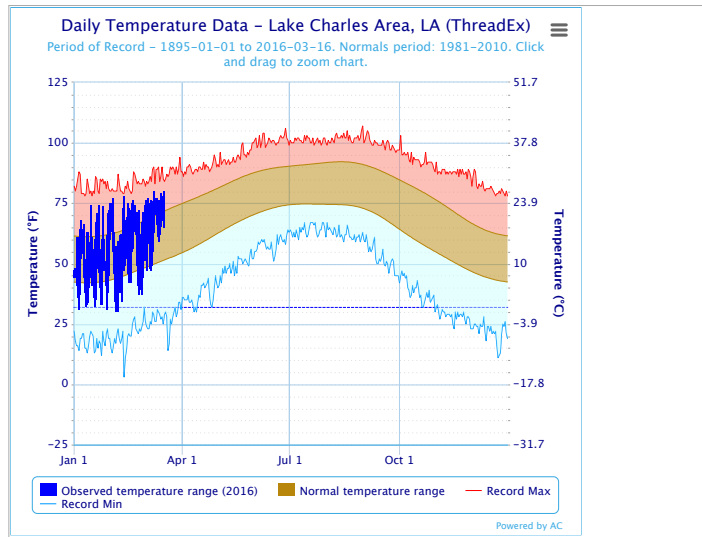
# Climate Tools and Data Sources

Finding and Viewing Climate Information

# Southern Regional Climate Center (SRCC)

- CLIMOD (\$)
- NOWdata
- Current Weather
- Southern Climate

3/18/2016



3/18/2016

**Data for March 18 - Baton Rouge Area, LA (ThreadEx)**

Date	Max Temperature	Min Temperature	Precipitation	Snowfall	Snow Depth
2000-03-18	74	58	0.78	0.0	0
2001-03-18	66	42	0.00	0.0	0
2002-03-18	83	65	0.00	0.0	0
2003-03-18	77	55	0.35	0.0	0
2004-03-18	80	61	0.00	0.0	0
2005-03-18	66	34	0.00	0.0	0
2006-03-18	62	55	0.00	0.0	0
2007-03-18	74	50	0.00	0.0	0
2008-03-18	85	71	T	0.0	0
2009-03-18	81	49	0.00	0.0	0
2010-03-18	69	44	T	0.0	0
2011-03-18	82	63	0.00	0.0	0
2012-03-18	85	67	0.00	0.0	0
2013-03-18	82	65	T	0.0	0
2014-03-18	69	38	0.00	M	0
2015-03-18	80	65	T	0.0	0

**Summary**

Maximum Temperature						
Maximum	Average	Minimum	Percent of Years			
			>=100° F	>=90° F	>=50° F	<=32° F
85	75.9	62	0	0	100%	0

Minimum Temperature						
Maximum	Average	Minimum	Percent of Years			
			>=70° F	>=50° F	<=32° F	<=0° F
71	55.1	34	6%	69%	0	0

Precipitation						
Maximum	Average	Minimum	Percent of Years			
			>=0.01 inch	>=0.10 inch	>=0.50 inch	>=1.00 inch
0.78	0.07	0.00	13%	13%	6%	0

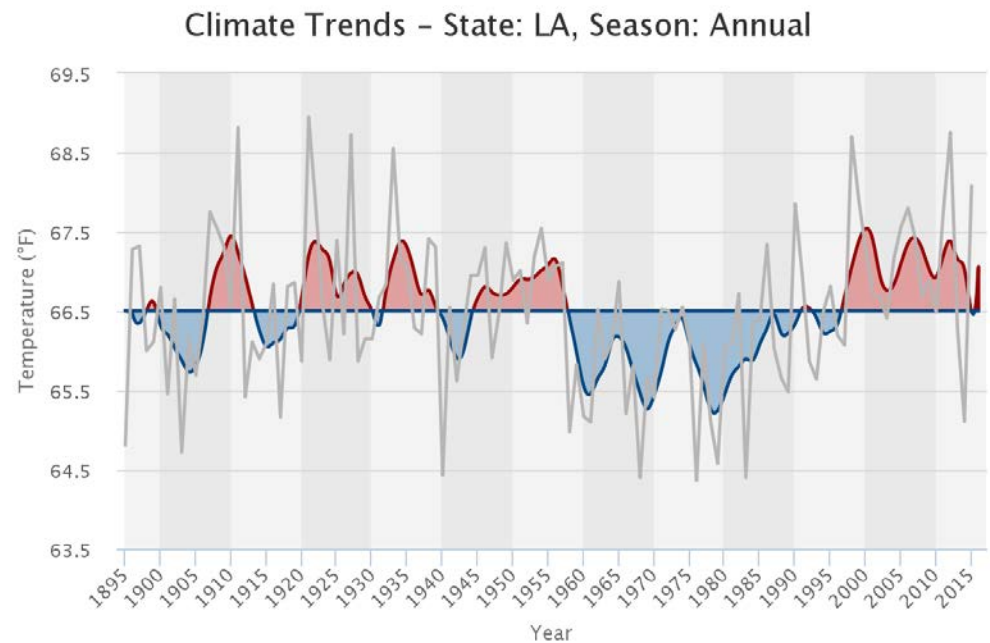
Snowfall						
Maximum	Average	Minimum	Percent of Years			
			>=0.1 inch	>=1.0 inch	>=3.0 inches	>=6.0 inches
0.0	0.0	0.0	0	0	0	0

Snow Depth						
Maximum	Average	Minimum	Percent of Years			
			>=1 inch	>=3 inches	>=6 inches	>=12 inches
0	0.0	0	0	0	0	0

<http://www.srcc.lsu.edu/>

# Southern Climate Impacts Planning Program (SCIPP)

- **Average Monthly Temperature and Precipitation Tool**
- **Southern U.S. Drought Tool**
- **Historical Climate Trends Tool**

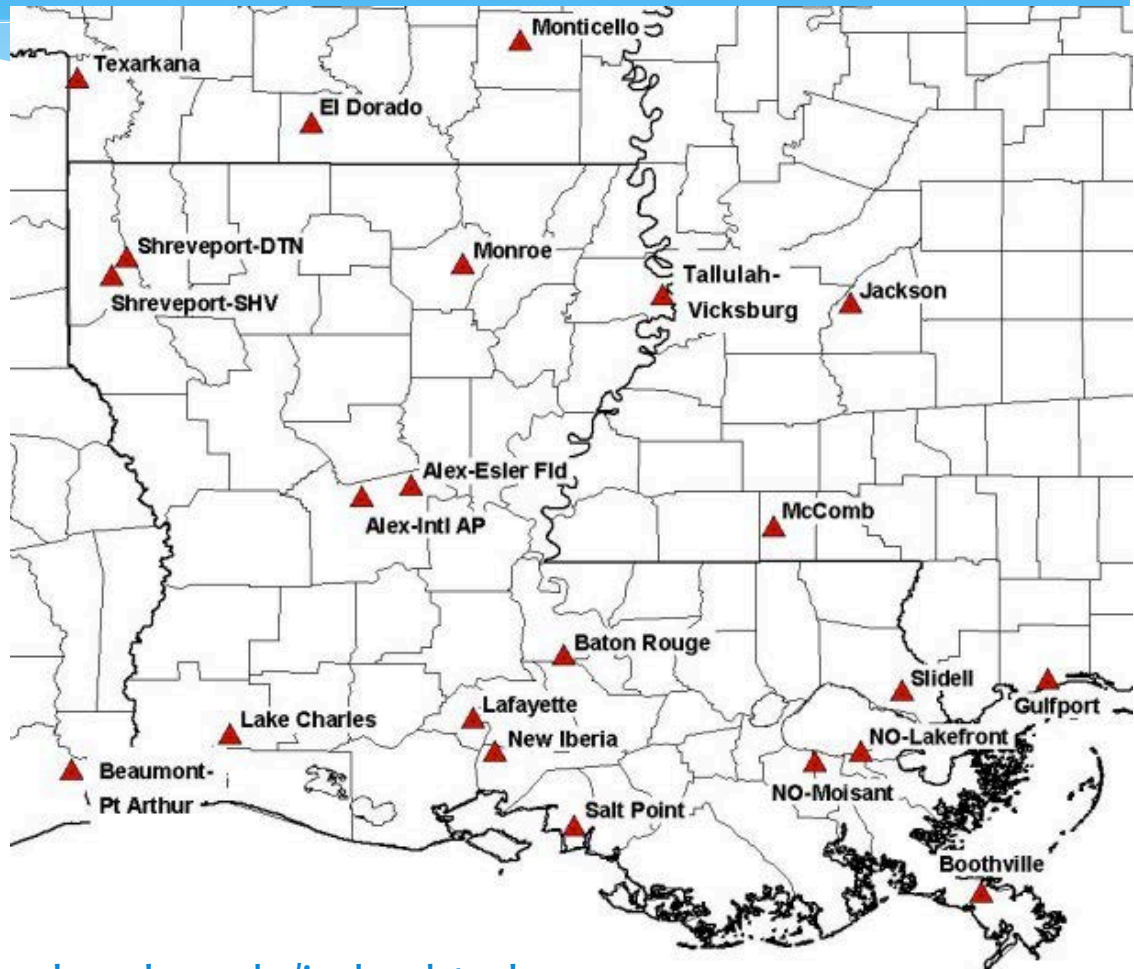


SCIPP (www.southernclimate.org)

<http://www.southernclimate.org/pages/data-tools>

# Louisiana Office of State Climatology (LOSC)

- Climate Info
- Area Radar
- LA Plots



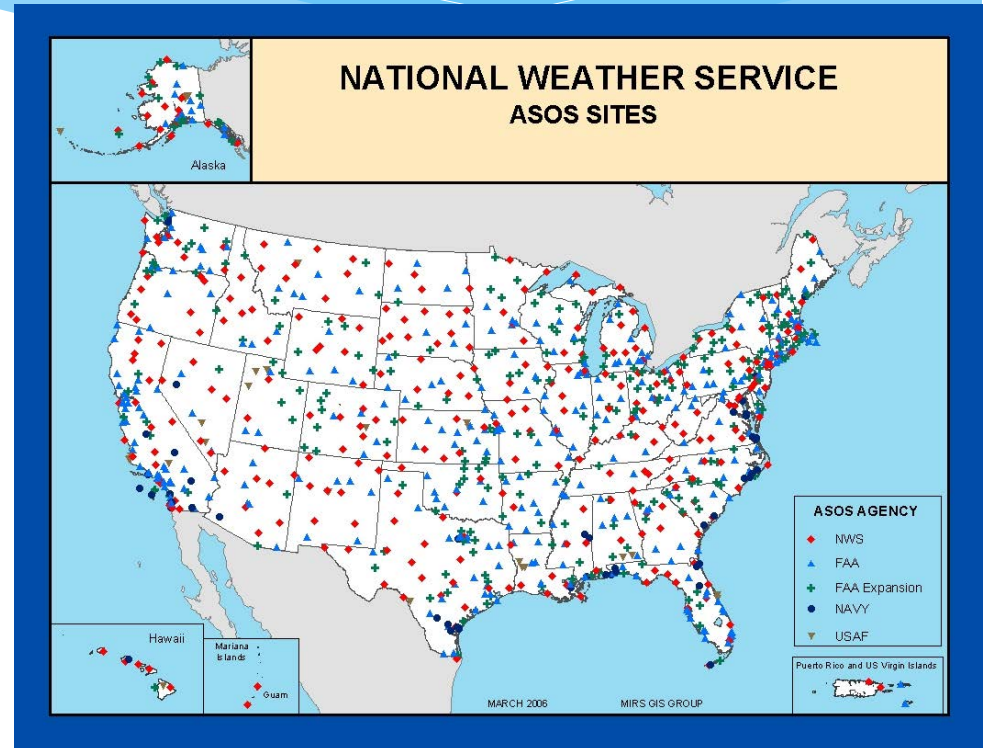
<http://www.losc.lsu.edu/index.html>



SOUTH CENTRAL  
CLIMATE SCIENCE CENTER

# National Weather Service (NWS)

- **Automated Surface Observing System (ASOS)**
- **Cooperative Observer Program (COOP)**
- **Heat Index and Wind Chill Charts**
- **River Forecast Centers**



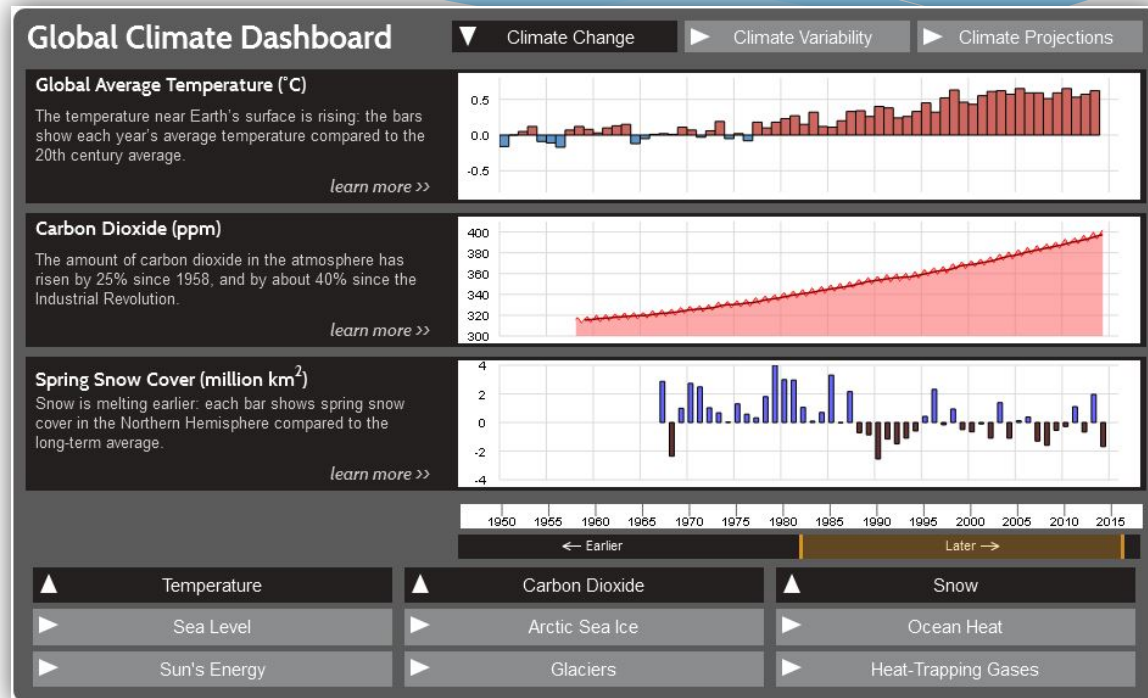
<http://www.nws.noaa.gov/>

<http://water.weather.gov/ahps/rfc/rfc.php>

<http://www.srh.noaa.gov/abr/c/>

# National Oceanic and Atmospheric Administration (NOAA)

- Global Climate Dashboard
- Climate Prediction Center



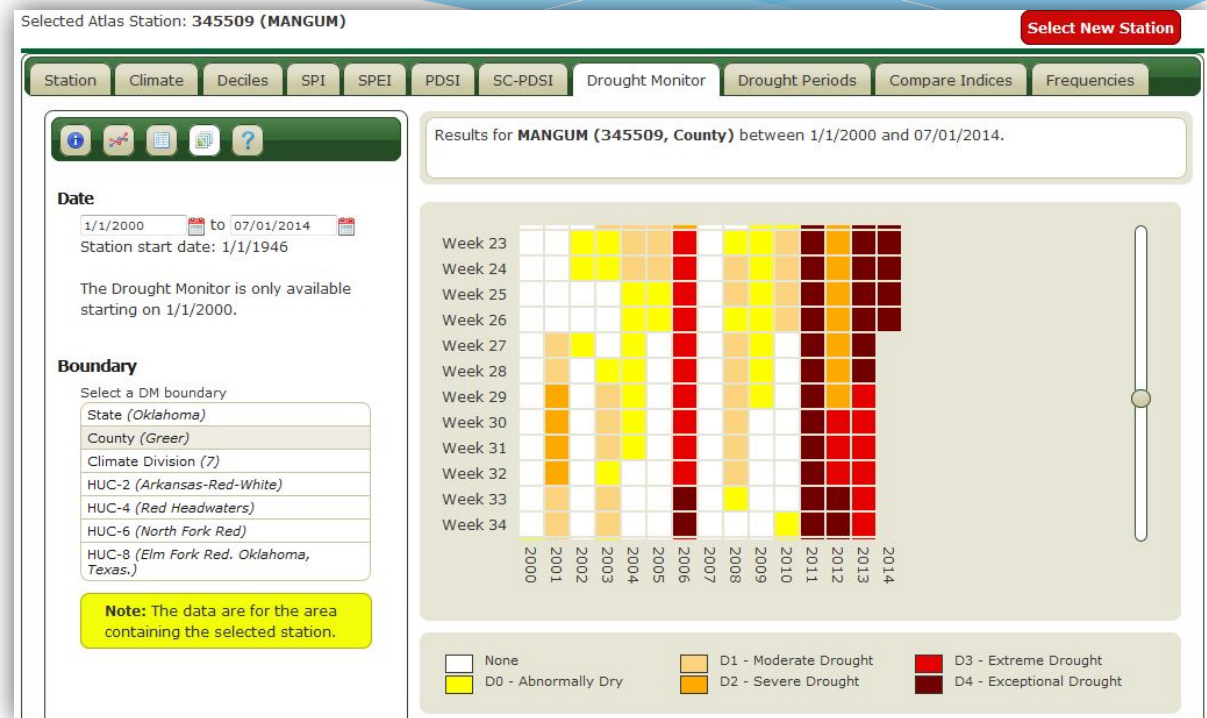
<http://www.climate.gov/>  
<http://www.cpc.ncep.noaa.gov/>



SOUTH CENTRAL  
CLIMATE SCIENCE CENTER

# National Drought Mitigation Center (NDMC)

- Drought Risk Atlas
- U.S. Drought Monitor



<http://droughtmonitor.unl.edu>

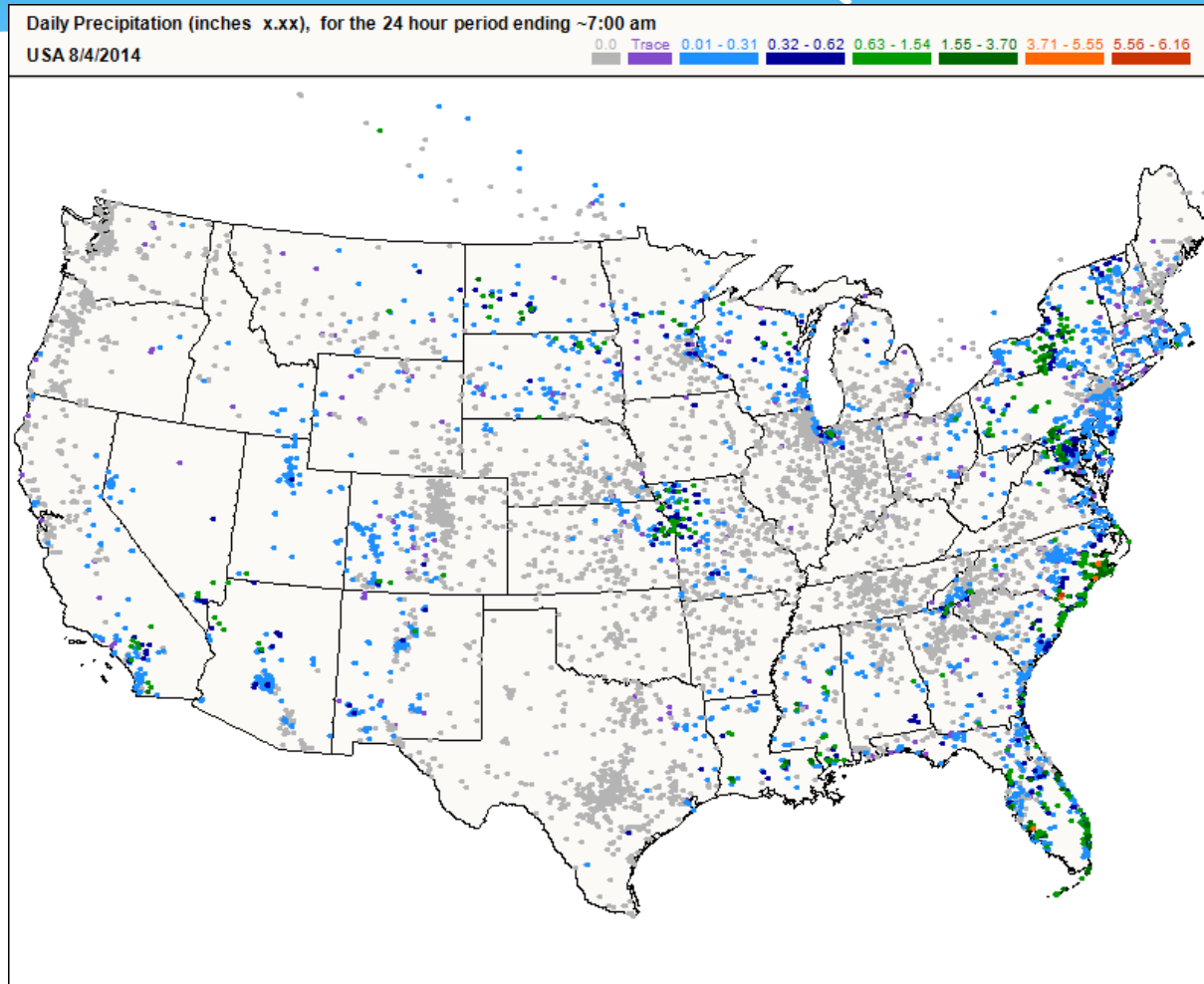
<http://droughtatlas.unl.edu/>



SOUTH CENTRAL  
CLIMATE SCIENCE CENTER



# Community Collaborative Rain, Hail, and Snow Network (Cocorahs)

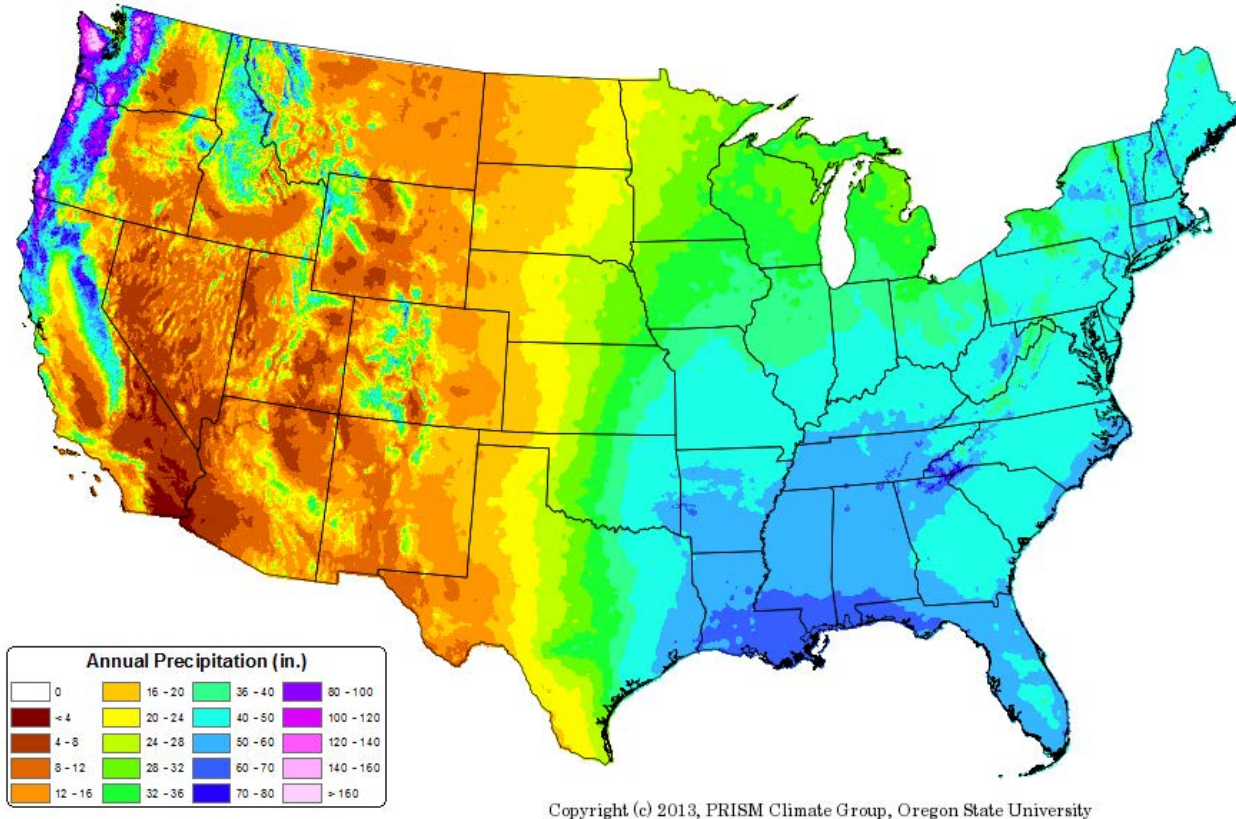


<http://www.cocorahs.org/>



# \* PRISM Climate Maps (PRISM Climate Group, Oregon State)

**30-yr Normal Precipitation: Annual**  
Period: 1981-2010



Copyright (c) 2013, PRISM Climate Group, Oregon State University

<http://www.prism.oregonstate.edu/>

# USGS stream gauge