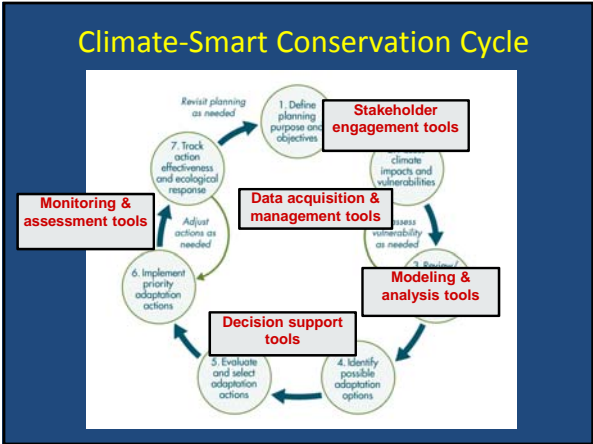


TOOLS SELECTION

What is a Tool?

- Documentation and guidance
- Application of data access and analysis
- Regulatory action
- Engagement strategies
- Decision support system

SOMETHING THAT HELPS YOU!!!



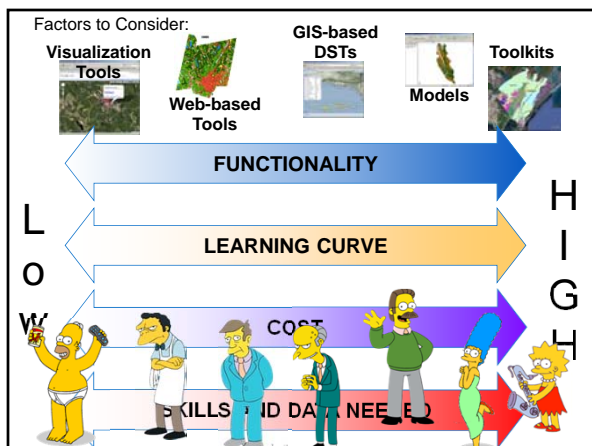
Two key principles for choosing data and tools

1. Your goals and objectives should drive the selection of tools and data, not vice versa
2. The sophistication of the VA should not exceed the sophistication of possible uses of VA results.

Choosing tools and data comes back to the basic questions:

- *What is the goal of your VA?*
– “Assessment questions”: *what do you need to know to answer them?*
- *Who will use the output and how?*
- *What resources do you have?*

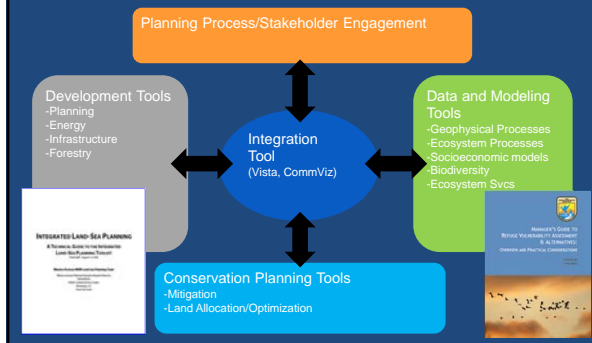
If you don't ask the right question, every answer feels wrong
Ani DiFranco



You don't have to pick just one!

Can use different tools and data at different points in the engagement or adaptation planning process

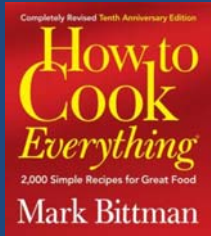
Toolkits: Linking groups of tools via interactive process



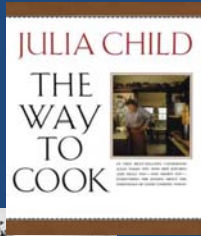
What we think you want to know (but may not tell you)

- What tools, processes, or approaches are best for helping me move forward?
 - Who to engage
 - How to engage them
 - What information/data I need and where to get it
- What are the best practices?
- What are the pitfalls to avoid?

Putting VA
Principles into Practice



VS



Tool Types

- Portals
 - Tools portals, e.g. Digital Coast, EBM Tools, CAKE, WeAdapt
 - Data portals, e.g. PNW Climate Sensitivity Database, NE Climate Data, DataBasin, Climate Wizard

Tool Types

- Portals
- Visualization
 - Complex (e.g. Climate Wizard)
 - Simple (e.g. CanViz)

Tool Types

- Portals
- Visualization
- Analytical
 - NatureServe Vista, CC Vulnerability Index
 - SLAMM





Tool Types

- Portals
- Visualization
- Analytical
- Socioeconomic
 - COAST
 - Spatial Trends in Socioeconomics

Tool Types

- Portals
- Data access
- Visualization
- Analytical
- Socioeconomic
- Indices

Tool Resources

ebmtools.org

<http://www.csc.noaa.gov/digitalcoast/>


Climate Tools Matrix


Climate Tools Decision Guide

EXTRA SLIDES

The Problem with Tools...


Complicated and Confusing





Require considerable capacity

Tend to drive a top down, "Predict-and-Plan" process



WAYS TO THINK ABOUT TOOLS

Type

Function

How it assists planning process

Sectors addressed



HOW TOOLS AFFECT THE POLICY CYCLE



	Stakeholder Engagement	Scoping	Assess			Plan	Implement	Monitor
			Impact	Vulnerability	Risk			
CanVis	Blue arrow	Blue arrow	Yellow arrow	Yellow arrow	Yellow arrow	Red arrow	Green arrow	Green arrow
SLR Viewer*	Blue arrow	Blue arrow	Yellow arrow	Yellow arrow	Yellow arrow	Red arrow	Green arrow	Green arrow
Our Coast, Our Future*	Blue arrow	Blue arrow	Yellow arrow	Yellow arrow	Yellow arrow	Red arrow	Green arrow	Green arrow
SimCLIM*	Blue arrow	Blue arrow	Yellow arrow	Yellow arrow	Yellow arrow	Red arrow	Green arrow	Green arrow
SLAMM	Blue arrow	Blue arrow	Yellow arrow	Yellow arrow	Yellow arrow	Red arrow	Green arrow	Green arrow
CommunityViz	Blue arrow	Blue arrow	Yellow arrow	Yellow arrow	Yellow arrow	Red arrow	Green arrow	Green arrow
NatureServe Vista*	Blue arrow	Blue arrow	Yellow arrow	Yellow arrow	Yellow arrow	Red arrow	Green arrow	Green arrow
HAZUS	Blue arrow	Blue arrow	Yellow arrow	Yellow arrow	Yellow arrow	Red arrow	Green arrow	Green arrow
SoVI	Blue arrow	Blue arrow	Yellow arrow	Yellow arrow	Yellow arrow	Red arrow	Green arrow	Green arrow
CCVI	Blue arrow	Blue arrow	Yellow arrow	Yellow arrow	Yellow arrow	Red arrow	Green arrow	Green arrow
InVEST*	Blue arrow	Blue arrow	Yellow arrow	Yellow arrow	Yellow arrow	Red arrow	Green arrow	Green arrow

TYPES OF TOOLS



Process



Visualization



Web-based

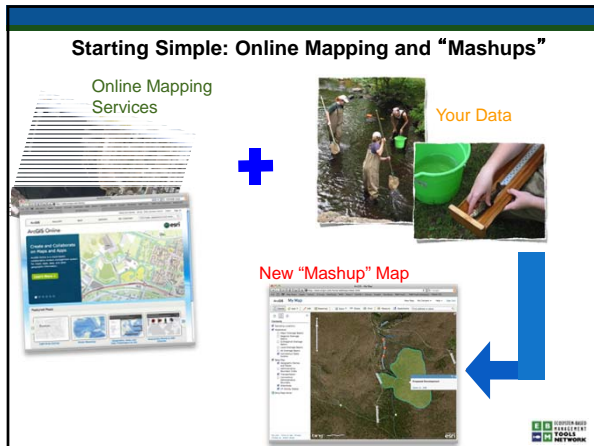


Desktop GIS



Toolkits





Web-based Tools

SLR and Coastal Flooding Impact Viewer
(NOAA CSC)
Geographic Focus: National

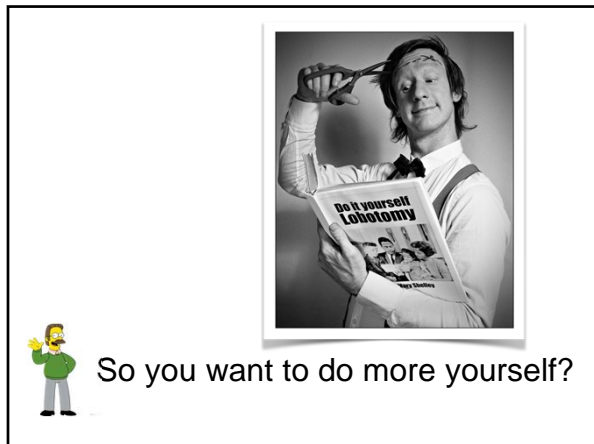
Coastal Resilience
(The Nature Conservancy & Partners)
Geographic Focus: Regional/Local
(LIS, GOM, Florida Keys, Ventura area in CA)

Climate Wizard
(The Nature Conservancy)
Geographic Focus: National/Global

Pros & Cons of Web-Based Tools

Pros	Cons
✓ Easy to start: its all been done for you	✓ Often limited to pre-run packaged analyses
✓ Usually easy to use: good interfaces and limited options	✓ Usually limited to its data, can't integrate local data
	✓ Often can't readily save and download data and your results for further work

SUPPORTS 2012



GIS-based Decision Support Tools

communityviz®

A planning tool that allows communities to develop and compare alternate scenarios.

Community Planning

Urban Planning

Conservation

Parks

Transportation

communityviz

Fly-through

ArcGIS Extension

Multiple Scenarios

Intuitive Interface

Analysis

Dynamic

Interactive

communityviz

For the Serious DIY: Toolkits

I built my toolkit in just one weekend!

Planning projects have diverse needs and issues

Generally not a single, one-size-fits-all tool available

Still, there are many tools that can address parts of your needs, so....



Linking groups of tools through an interactive process gives the flexibility to address an almost unlimited number of issues, with existing tools.



Steps in Assembling a Toolkit

Produce an information workflow that supports your project objectives & decision product needs

Search & select tools that can produce the needed products from available data

Filter selection for tools that meet your resource/capacity

Try to pick tools that are able/proven to work together if possible



	Integrated Planning for Resilient Communities Berkeley-Charleston-Dorchester, SC Function: Supports integrated hazard- and ecosystem-based land use planning
	Integrated Land-Sea Toolkit Mission-Aransas NERR, TX Function: DST to assess the effects of urbanization on water quality and biodiversity
	Refuge Vulnerability Assessment & Alternatives Toolkit VA, NV, CA Function: Cumulative effects assessment for wildlife refuges and evaluate management scenarios

