

# Overview of Regional Climate Partnerships

---

April Taylor

Chickasaw Nation, Choctaw Nation of Oklahoma, and  
South Central Climate Science Center

***NCTC- Vulnerability Assessment Training June 2015***



**SOUTH CENTRAL  
CLIMATE SCIENCE CENTER**

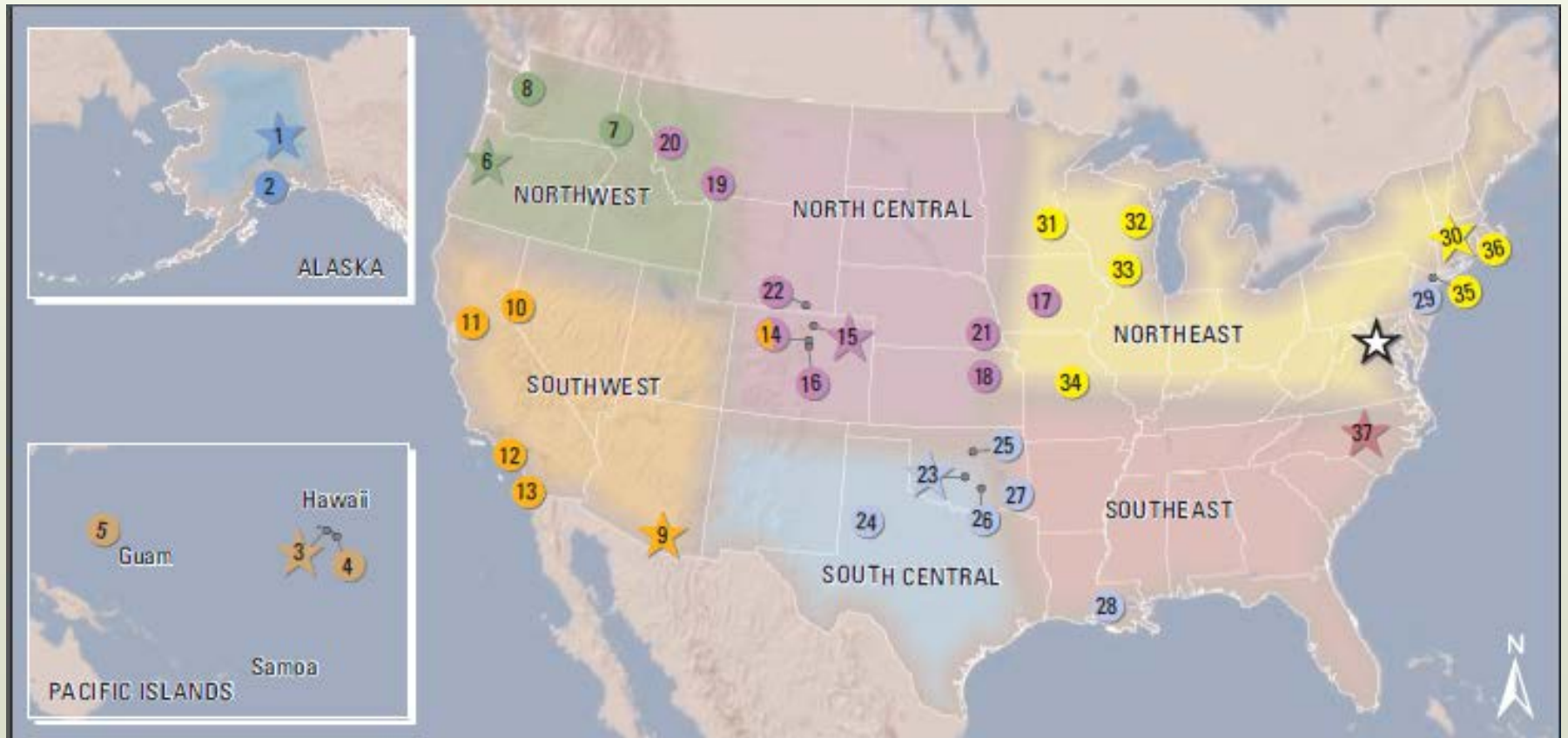
# My Position:

- Facilitate building relationships between tribes and the South Central Climate Science Center (i.e. OK, TX, NM, and LA)
- Matchmaking tribal staff and climate researchers
- Aiding in the translation and communication of climate science to tribal officials and staff
- Building tribal capacity and providing training for tribal staff for vulnerability assessments and climate adaptation planning
- Building capacity in the next generation of tribal staff and promoting native scientist in the climate related fields



# 1. Climate Science Centers (CSCs):

- Under Dept. of Interior and U.S. Geological Survey
- 8 Climate Science Centers



# CSC Structure & Organization:

- USGS science center
- Host university - Consortium
- Stakeholder Advisory Council (SAC)
- Science Implementation Panel (SIP)
- Science planning (1 yr and 5 yrs)
- Government to government consultation



# SC-CSC Consortium:

- Universities: University of Oklahoma, Texas Tech University, Oklahoma State University, Louisiana State University
- Tribes: Chickasaw Nation, Choctaw Nation of Oklahoma
- Federal Agencies: National Oceanographic and Atmospheric Administration's Geophysical Fluid Dynamics Lab
- We are the only Climate Science Center with sovereign tribal nations on the consortium.
- We are the only CSC with two full-time tribal liaison.



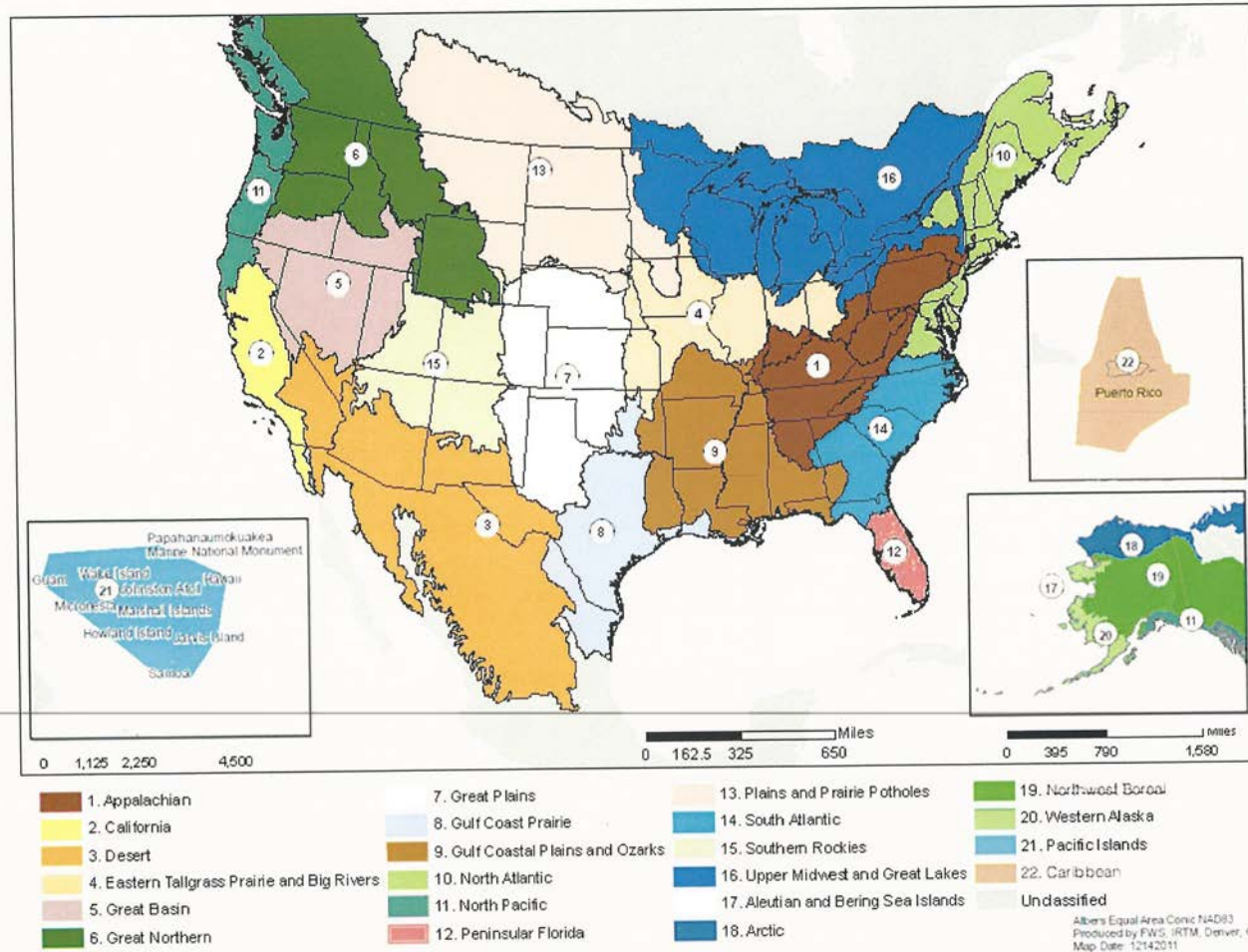
# Climate Science Centers:

Specific roles:

- Provide climate science to users
- Global climate models; downscaling; data integration into ecological models
- Best Practices of Uses of Climate Science

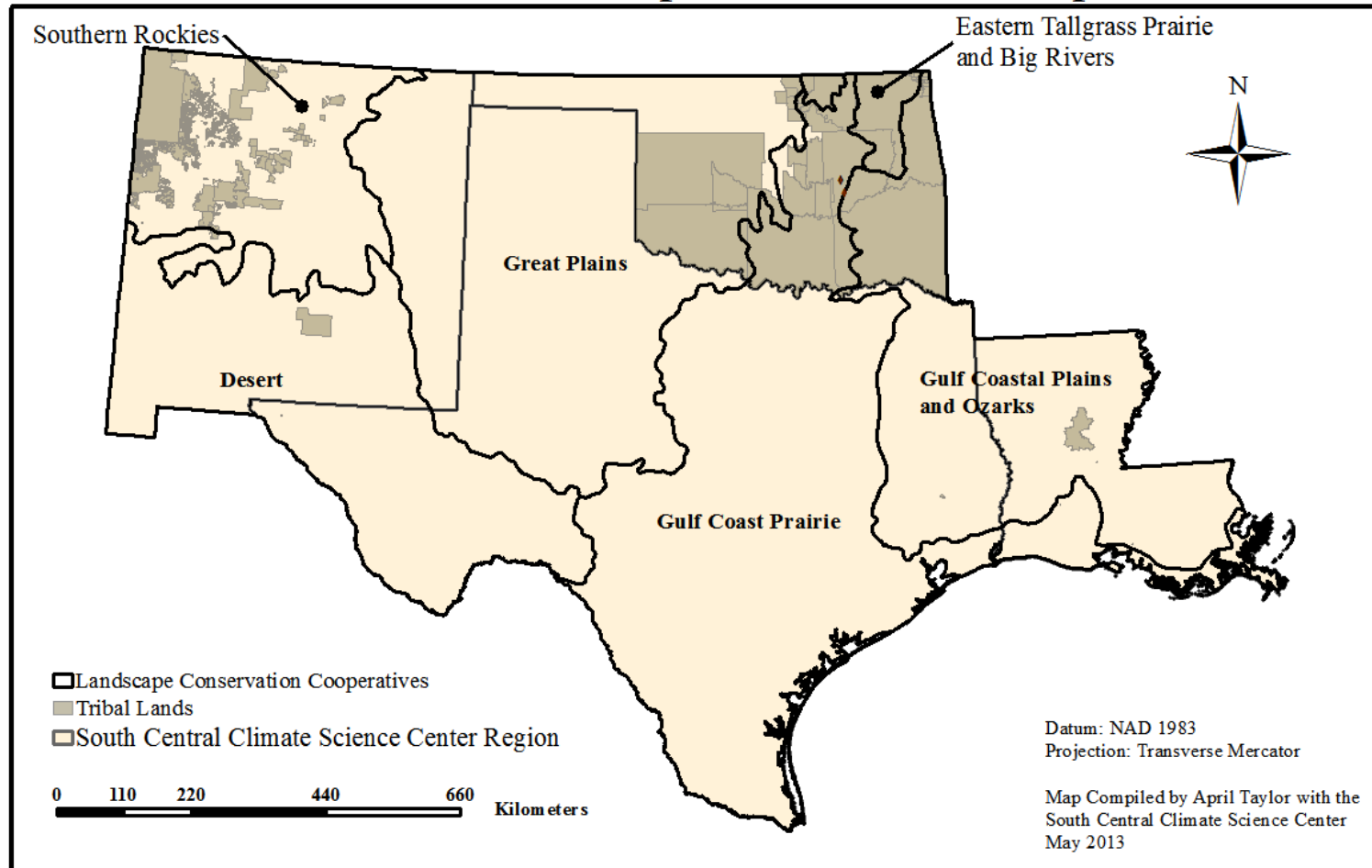


# 2. Landscape Conservation Cooperatives (LCCs):



# Landscape Conservation Cooperatives (LCCs):

## Tribal Lands and Landscape Conservation Cooperatives



SOUTH CENTRAL  
CLIMATE SCIENCE CENTER



# Structure and Organization:

- U.S. Fish and Wildlife Service or Bureau of Reclamation
- Steering Committees –
  - federal, state, local governments, tribes, universities, non-governmental organizations (NGO), and landowners
- Science Teams
- International (i.e. Mexico) network of partners



# Landscape Scales:

- Priority Habitats and Species
- Large scales or large ecoregions or watersheds (i.e. not local or project based)
  - Amounts (acres),
  - Configurations (patch size, landscape compositions, and connectivity), and
  - Conditions (structure, compositions, water quality, water quantity)



# Example Projects:



## Gulf Coastal Plains and Ozarks:

- Surveying winter waterfowl distributions, migration patterns, and responses to weather patterns
- Creating an alligator gar spatial habitat model by mapping habitat availability and suitability and monitoring behavior and floodplain habitat use



# Landscape Conservation Cooperatives:

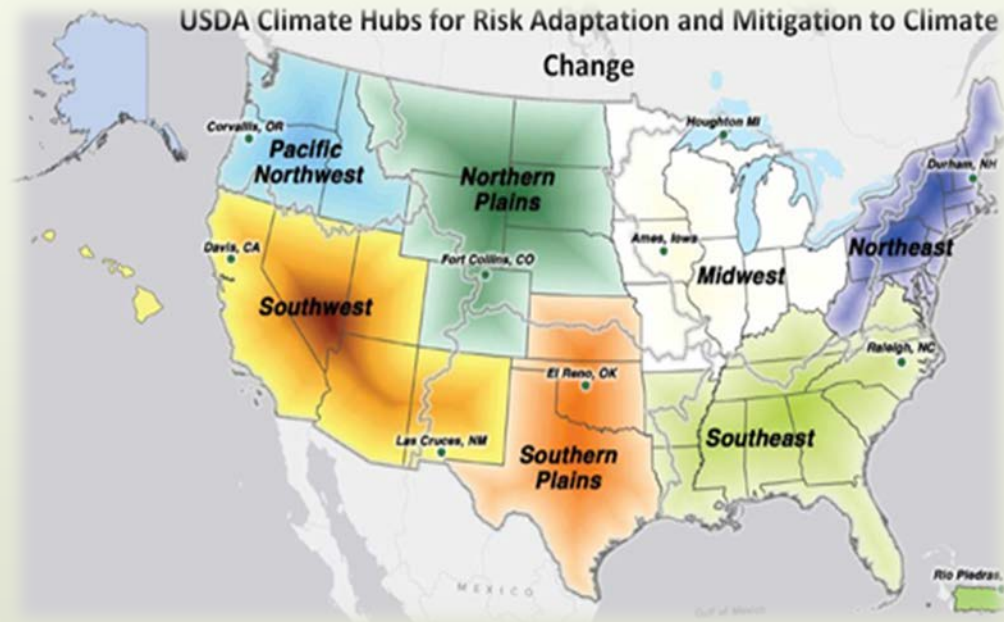
Specific roles:

- Integrating climate science into conservation practices
- Provide climate science centers resource managers climate science needs
- Work together with the CSCs to determine how plants and wildlife are and will be impacted by climate change
- \* Key partner in providing assistance for vulnerability assessments of plants and wildlife



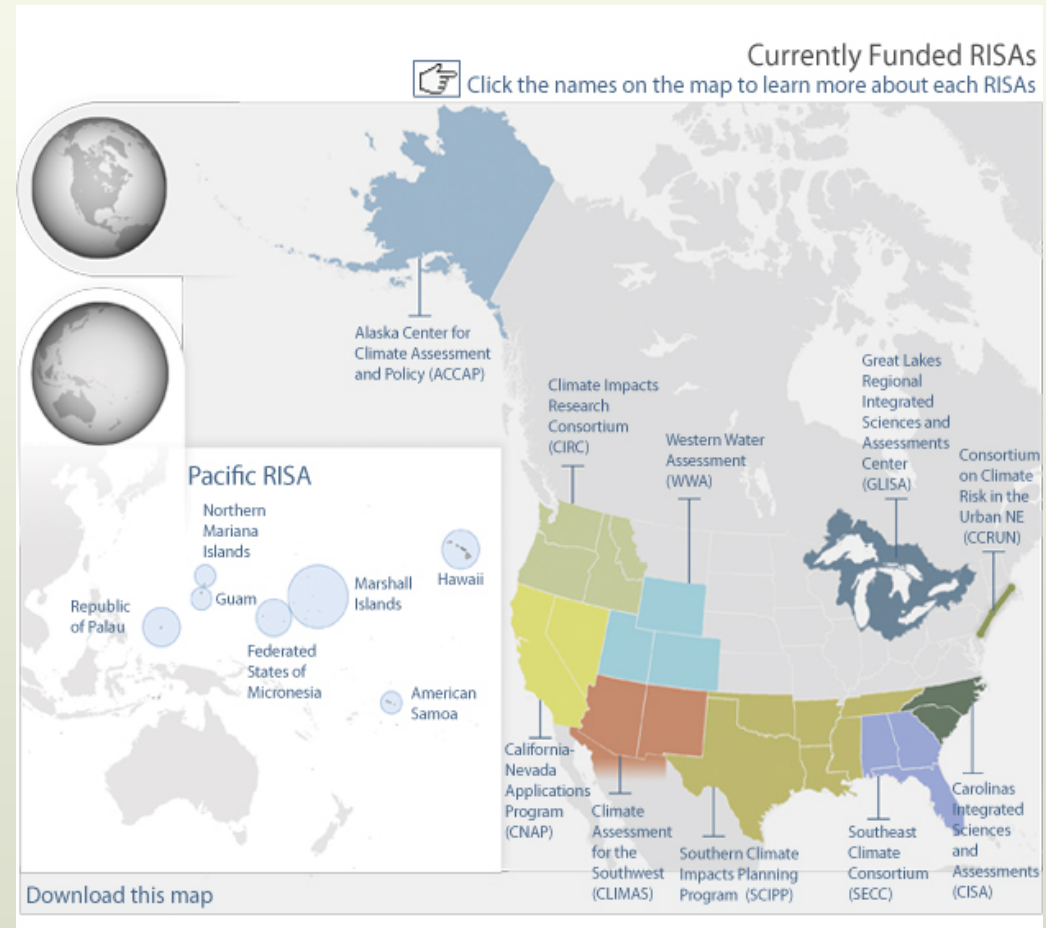
# 3. USDA Climate Hubs:

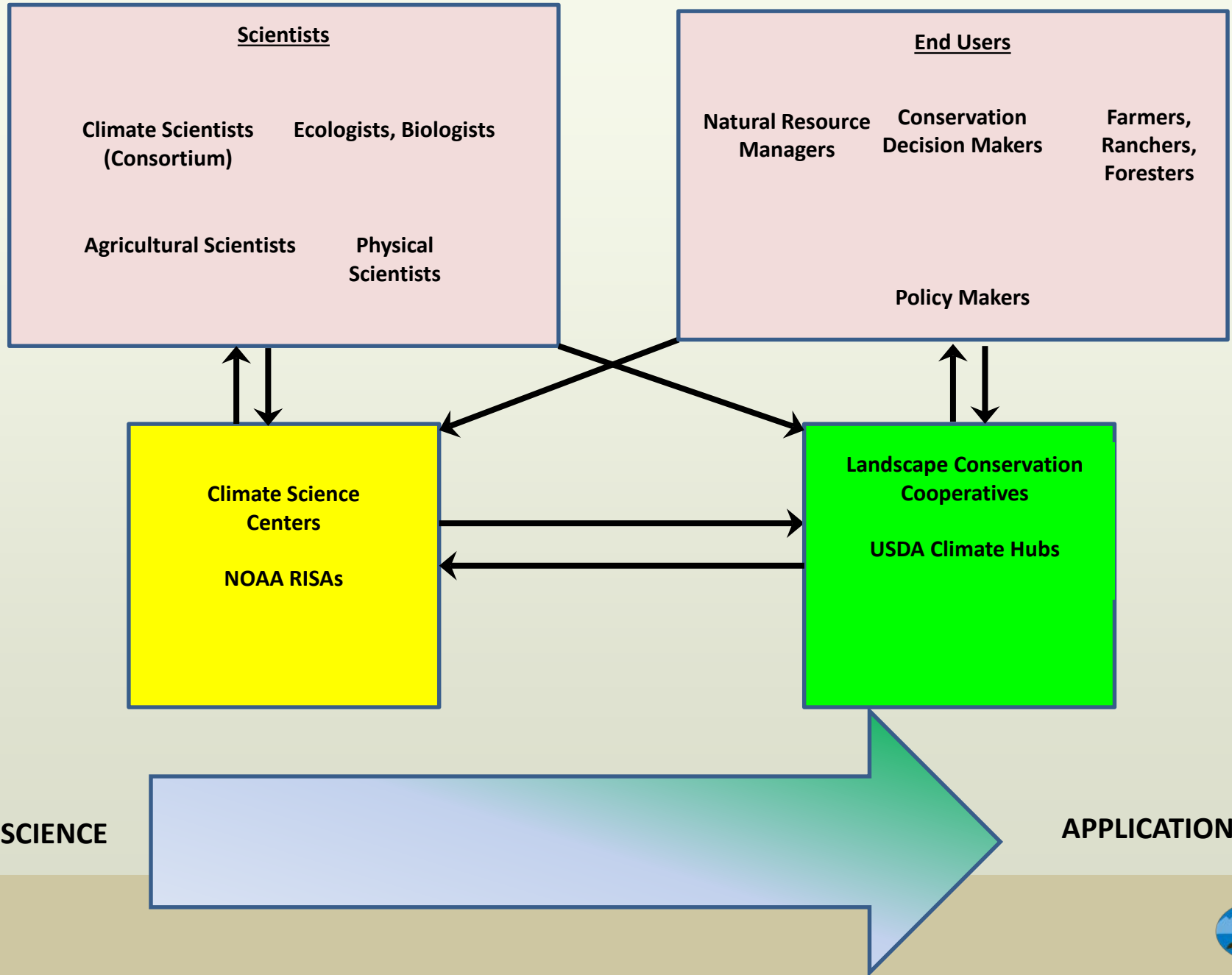
- Regional Hubs for Risk Adaptation and Mitigation to Climate Change
- 7 locations
- Focus on effects of climate change for agricultural production, rural economic development
- Deliver climate adaptation information to farmers, ranchers, and forest landowners



# 4. NOAA RISAs:

- Regional Integrated Sciences & Assessments
- 11 programs
- Assess what are stakeholders science needs
- Emphasis on producing tools and products decision makers
- Translation of science into “actionable knowledge”





# SCCSC Climate Partnerships:

- 7 Consortium members
- 6 LCCs
- 68 Tribes
- DOI Bureaus of Indian Affairs, Land Management, and Reclamation
- 6 USGS Science Centers (Water and Biology)
- USDA Southern Plains Regional Climate Hub
- NOAA Regional Integrated Sciences and Assessments (RISA) Program
- State natural resource management agencies





# Coordination:

Over 200 engagements for coordination per year!		
SCCSC	Bi-weekly calls with all 7 consortium members	24
	Bi-weekly calls with NOAA-GFDL team	24
	Bi-monthly call and webinar with SAC	6
	Bi-monthly call and webinar with LCCs and other external partners	6
LCC	Attend 2 quarterly meetings per LCC	12
	Monthly calls for each LCC	72
	Great Plains LCC co-located – regular weekly meetings	52
	Assist LCCs with Tribal engagement (classes, meetings, vulnerability assessments)	
Partner	Monthly call with USDA Southern Plains Regional Climate Hub (share board)	12
	Monthly PI team meetings for NOAA Southern Climate Impacts Planning Program	12



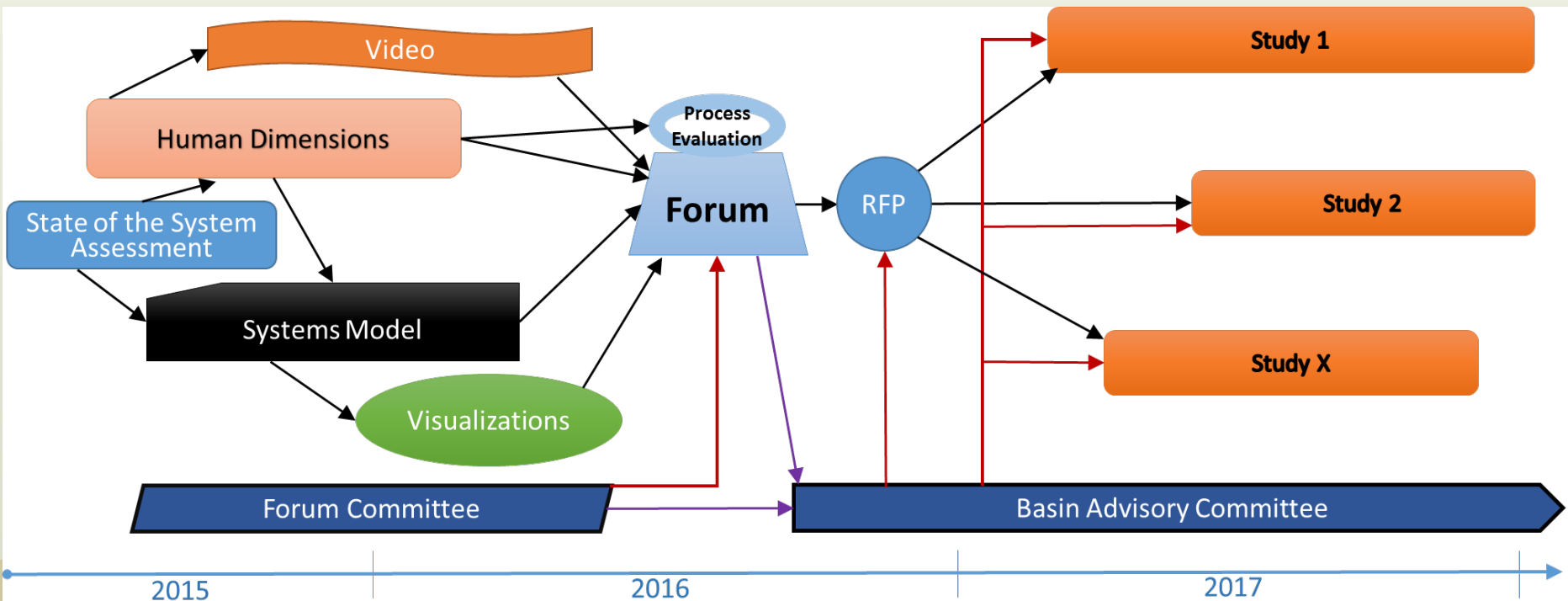
# Coordination:

- Co-location of key partners
- Joint fund projects (leveraging)
- Cross membership



# The Two-Basins Project (Rio Grande & Red River)

- Initial focus is on a meeting, the Forum.
  - Items to the left of the Forum will support/inform it.
  - After the Forum, focus will be on the Basin Advisory Committee, which will represent stakeholder needs and guide research.
- Our Goal: Develop two groups of stakeholders who will guide climate/conservation research in these two basins for the SC CSC and its partners.
- The process below will be replicated in both the basins.
- Opportunities for Cross-CSC collaborations



# Questions?

## Contact Information:

**April Taylor**

**Sustainability Scientist**

**Email: [April.Taylor@chickasaw.net](mailto:April.Taylor@chickasaw.net)**

**Kim Merryman**

**Assistant Sustainability Scientist**

**Email: [Kim.Merryman@chickasaw.net](mailto:Kim.Merryman@chickasaw.net)**

